

Boundary Realignment Recommendations - 1st Reading

February 22, 2021

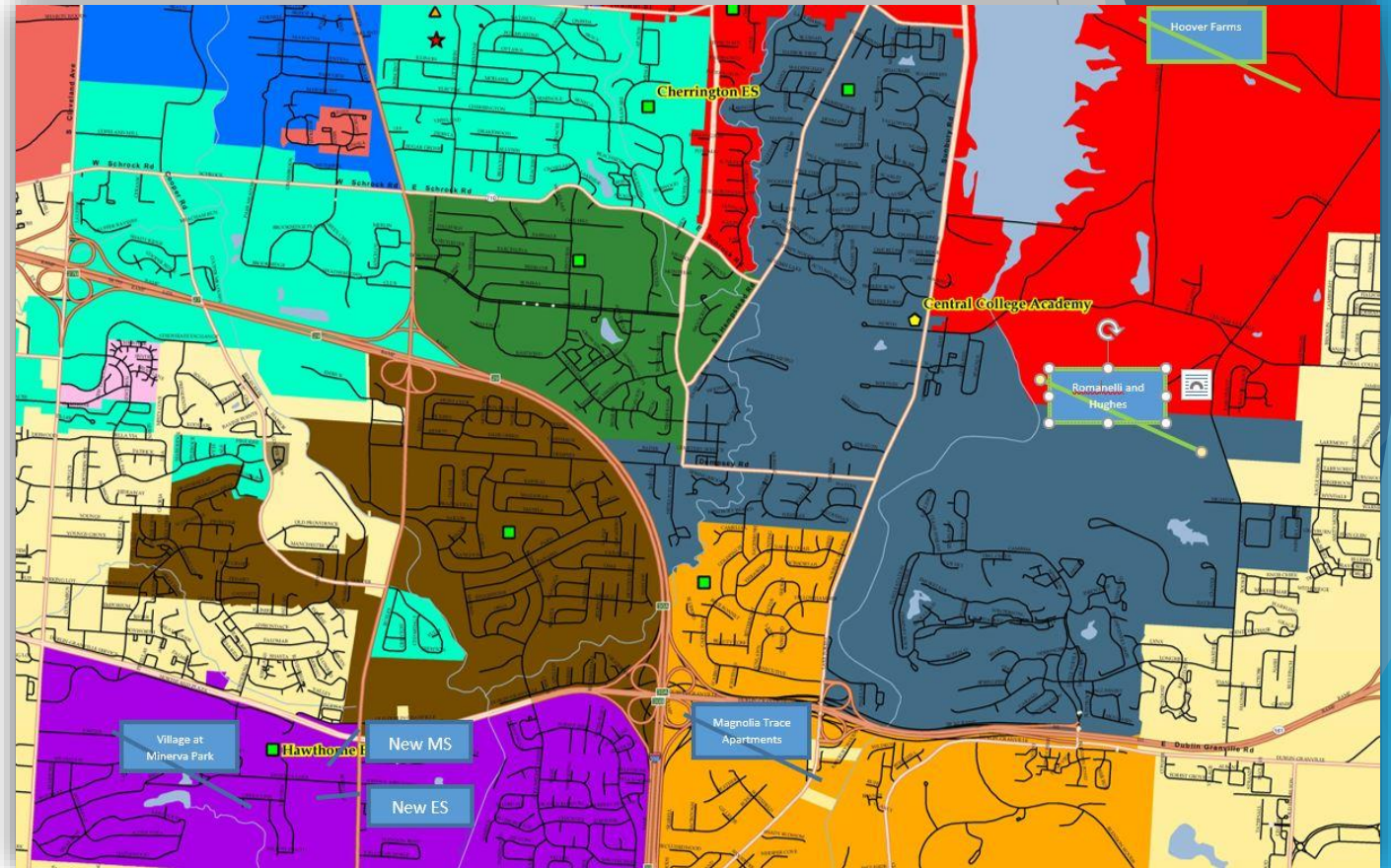
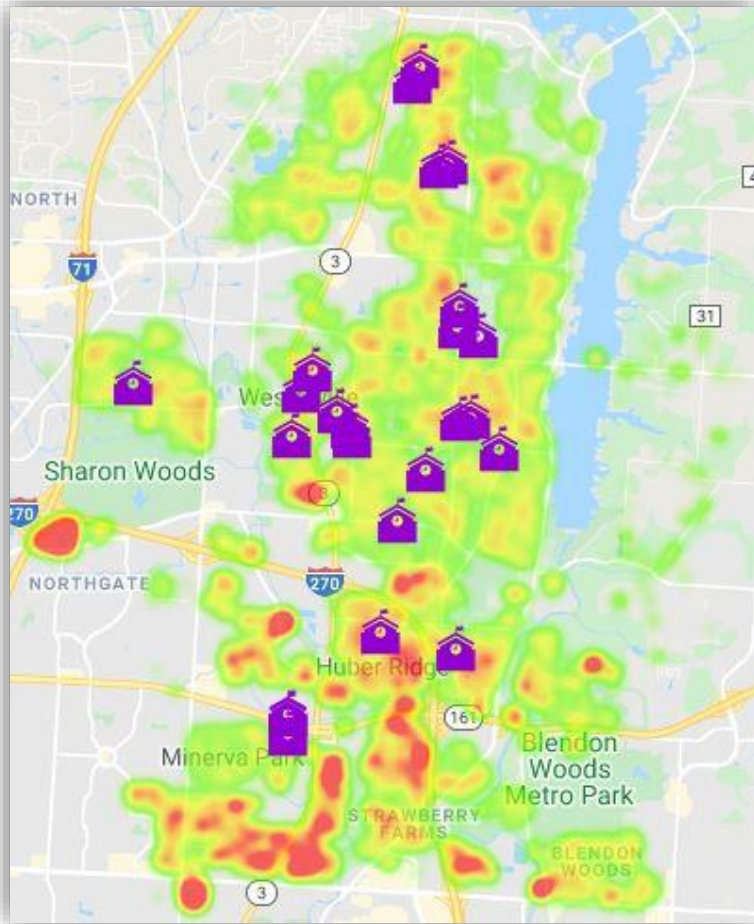


About the Process

- ▶ 2017 Community Facility Master Plan Committee Recommendations
- ▶ Existing Building Capacity Issues
- ▶ Population Densities and Locations of Existing Schools
- ▶ Forecasted Growth Models
- ▶ November 2019 Ballot Issue



Student Population Density Heat Map and Newer Developments



Structure of the Process

- ▶ Planning
 - ▶ Board of Education Policy Review and Revision
 - ▶ Board of Education Charge to the Committees
 - ▶ Community Feedback
 - ▶ Committee Membership
 - ▶ Data Provided for Committee Work
- ▶ Committee Work Sessions
 - ▶ Kick Off Meeting
 - ▶ Independent and Collaborative Sessions
 - ▶ Work Product for Community Feedback
 - ▶ Final Recommendations



Elementary School Realignment Committee

This committee's focus will be on a recommendation for elementary school boundary lines while working collaboratively with the MSRC to meet the policy and charge.

- ▶ Membership (13 Members and 1 BOE Observer)
 - ▶ Co-facilitators: Barb Wallace and Meg Hogan
 - ▶ Community Members: Ryan Hilperts, Farres Moidu, Elena Brady, Skip Ivery
 - ▶ WCS Administration: Cheryl Relford (Scribe), Ernest Clinkscale, Chris Poynter (Software Tech), Scott Gaddis, Vicki Moss, Jan Horn
 - ▶ WEA Member: Sarah Ward
 - ▶ Board Member (Observer): Tracy Davidson
- ▶ Board Committee



Middle School Realignment Committee

This committee's focus will be on a recommendation for elementary school boundary lines while working collaboratively with the ESRC to meet the policy and charge.

- ▶ Membership (14 Members and 1 BOE Observer)
 - ▶ Co-facilitators: Scott Reeves and Jessica Stein
 - ▶ Community Members: Jeremy Dicus, Darlene Dalton, Jennifer Koval, Sasheen Phillips
 - ▶ WCS Administration: Cynthia DeVese, Kendall Harris, Jennifer Knapp (Scribe), Earl Rahm, Randy Snyder, Dru Tomlin (Software Tech), Becca Yanni
 - ▶ WEA Member: Tom Markle
 - ▶ Board Member (Observer): Rick Vilardo
- ▶ Board Committee



Plan Development Committee (PDC)

- ▶ Provide requested data and support to the ESRC and MSRC and to ensure that recommendations meet the policy and charge expectations.
 - ▶ Dr. John Kellogg, Superintendent
 - ▶ Nicole Marshall, Treasurer
 - ▶ Mark Hershiser, Deputy Superintendent
 - ▶ Scott Dorne, Assistant Superintendent of Operations
 - ▶ Dr. Paul Hopkins, Assistant Superintendent of Teaching and Learning
 - ▶ **Scott Reeves, Executive Director of Secondary Academic Affairs**
 - ▶ **Barbara Wallace, Executive Director of Elementary Academic Affairs**
 - ▶ Greg Viebranz, Executive Director of Communications and Technology
 - ▶ Kari Dennis, Manager of Food Service and Purchasing
 - ▶ Guerdie Glass, Director of Special Education
 - ▶ Bob Lynde, Director of Purchasing and Logistics



Policy 7110 & Charge - Points of Emphasis

- ▶ Walking distance for non-transport areas.
- ▶ Ability to accommodate projected enrollment growth.
- ▶ Effect of boundary changes on schools' demographic profile.
- ▶ Limiting the impact of attendance boundary changes.
- ▶ Boundary development process requires community feedback.

CHARGE TO THE 2019-2020 REALIGNMENT COMMITTEE

The future opening of a new elementary and new middle school in the Westerville City School District has created a need for the realignment of attendance boundaries at those instructional levels. The Westerville Board of Education and the Superintendent recognize that community input into the realignment process is critical. Therefore, as part of its efforts to develop an effective, appropriate boundary realignment plan, the Westerville Board of Education hereby creates the 2019-2020 Realignment Committees. District staff who are facilitating and serving on a committee are charged with the task of engaging the community, incorporating community feedback, and bringing recommended changes to current elementary and middle school attendance boundaries to the Board of Education for its consideration or subsequent approval. The Superintendent's Executive Leadership Team and/or his designees will serve as a sounding board "Plan Development Committee" to provide requested guidance to the Realignment Committees as they complete their work and to ensure the recommendations are in line with the standards set forth in this charge.



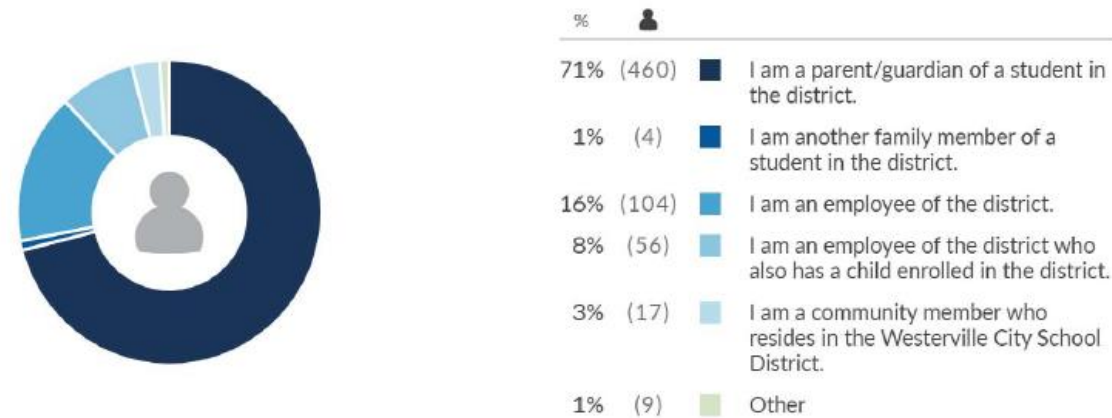
Initial Community Engagement Results

What considerations should be given to balancing the demographic composition of a school's student population with providing families a neighborhood school experience?

676 People

669 Thoughts

31153 Ratings



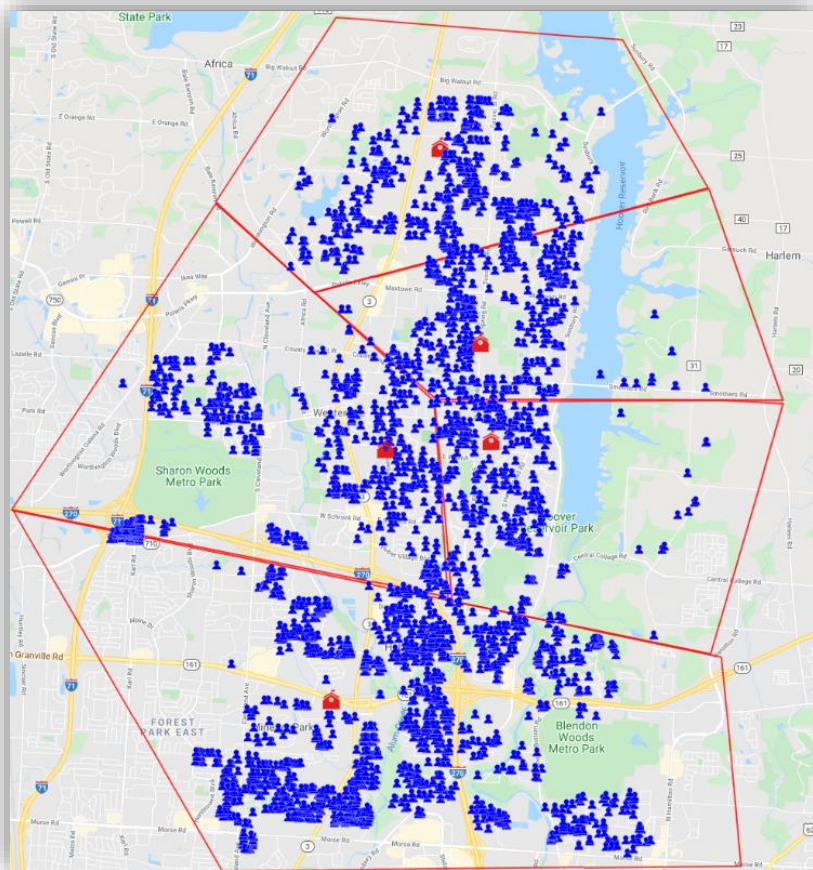
Initial Community Engagement Results

- ▶ Two Themes Prevailed:
 - ▶ Neighborhoods and Proximity to School Buildings
 - ▶ Travel Time on School Transportation
- ▶ Considerations for the Committees
 - ▶ Proximity to School Buildings
 - ▶ Areas with more students than capacity
 - ▶ Areas with schools within close proximity to each others
 - ▶ Travel Time on School Transportation
 - ▶ Students in the southern portion of the district will still need to travel north

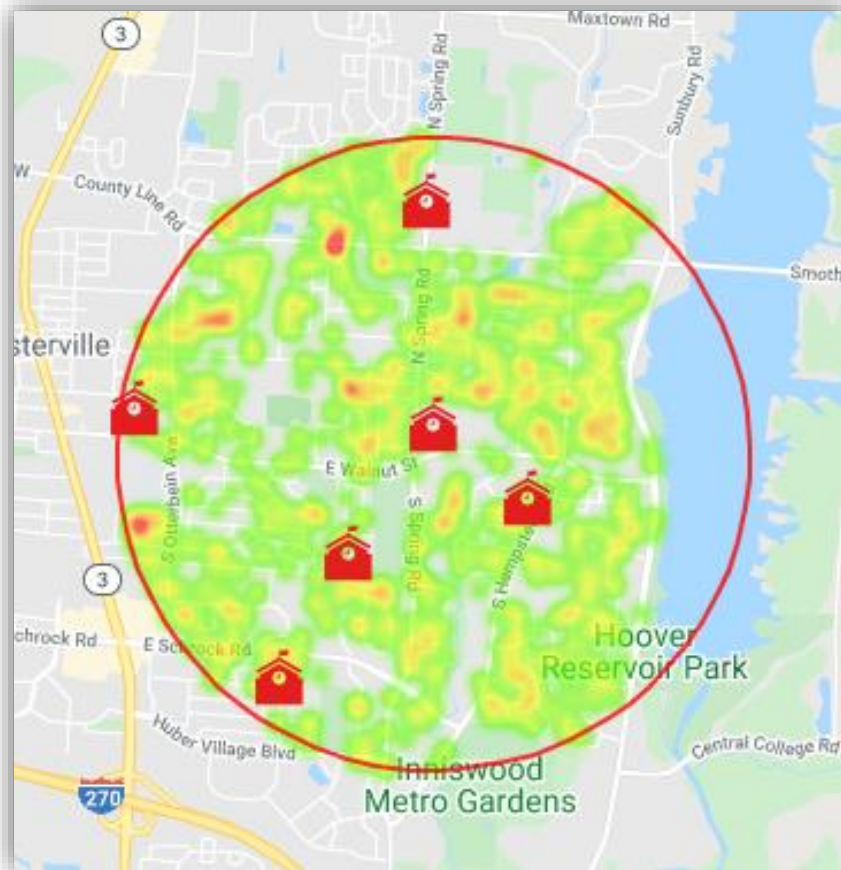


Proximity Challenges for School Boundaries

Density of Students



Clustering of Buildings



Where to Begin?

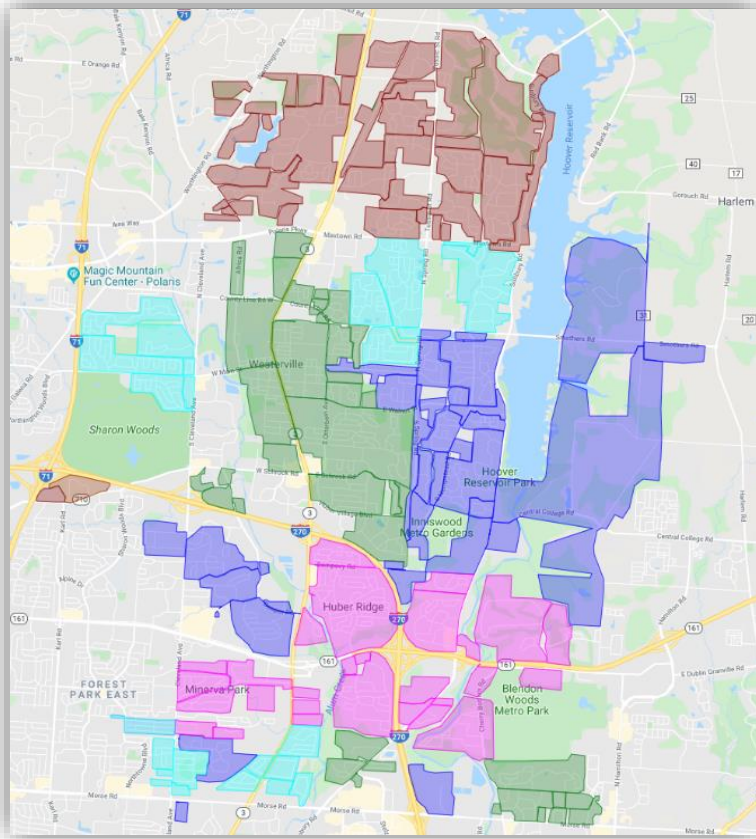
- ▶ Beginning with the New Buildings
- ▶ Relationship of Elementary Schools to Middle Schools
- ▶ Middle School Options
 - ▶ Building Capacities and Capacity Targets
 - ▶ Available Student Population
 - ▶ Proximity
 - ▶ Building Demographics
- ▶ Elementary School Options
 - ▶ Middle School Options
 - ▶ Available Student Population
 - ▶ Proximity
 - ▶ Building Demographics



Starting Points for the MSRC Committee

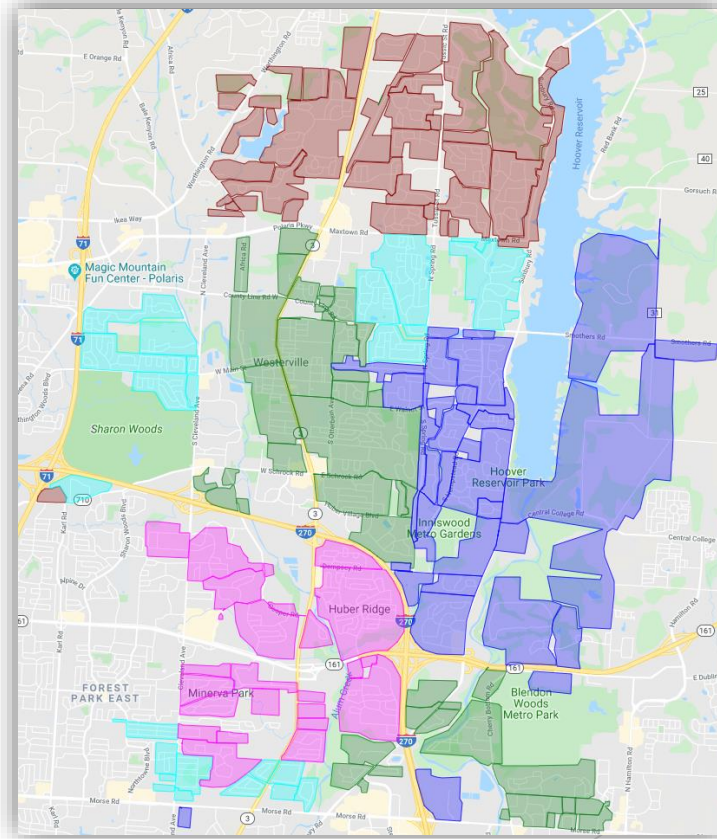
Middle School

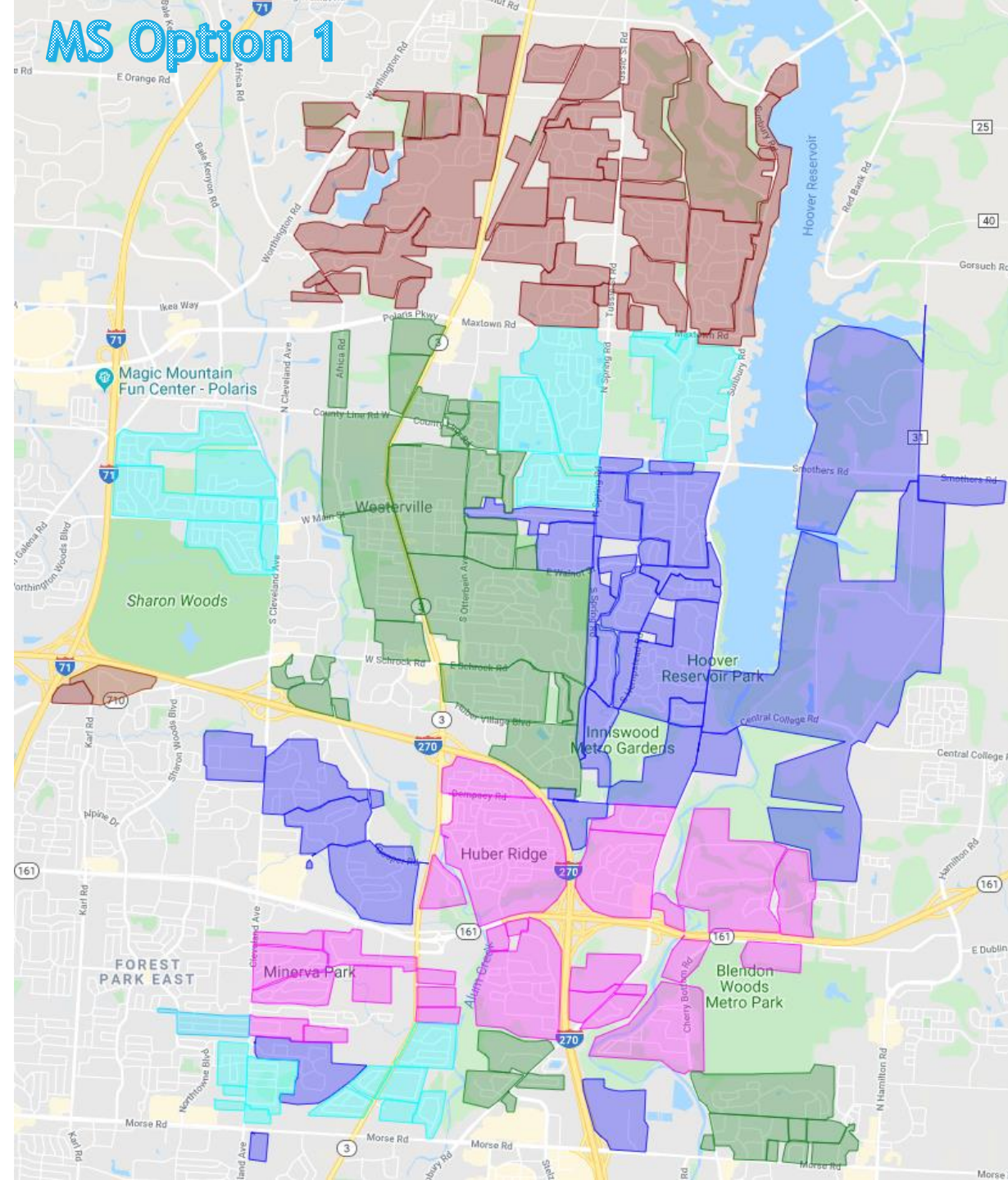
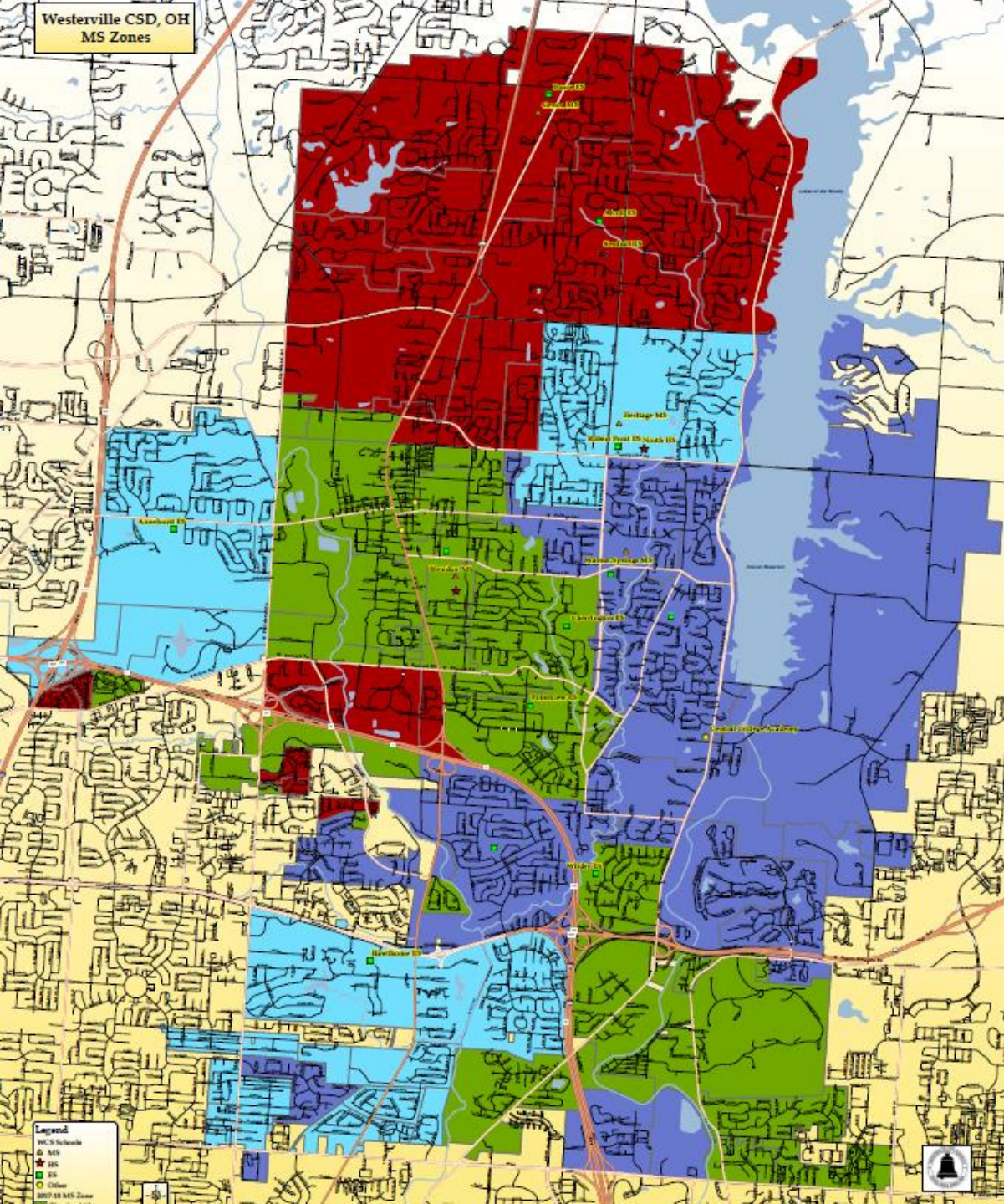
Starting Point Option 1



Middle School

Starting Point Option 2





Data for Committees to Begin

Middle School Option 1

Capacity and Demographic Data

Schools	FY19 10/5/18	FY20 10/11/19		Starting Point
Blendon	716	726	All Enrollment	572
		34.9%	Econ Disadvantaged	33.2%
		43.4%, 56.6%	Minority/White	40%, 60%
Genoa	891	880	All Enrollment	736
		22.1%	Econ Disadvantaged	18.2%
		38.5%, 61.5%	Minority/White	33.7%, 66.3%
Heritage	960	906	All Enrollment	635
		48.1%	Econ Disadvantaged	41.6%
		54.8%, 45.2%	Minority/White	47.7%, 52.3%
New MS			All Enrollment	731
			Econ Disadvantaged	46.4%
			Minority/White	56.6%, 43.4%
Walnut Springs	942	939	All Enrollment	675
		40.7%	Econ Disadvantaged	40.9%
		48.1%, 51.9%	Minority/White	52%, 48%

Middle School Option 2

Capacity and Demographic Data

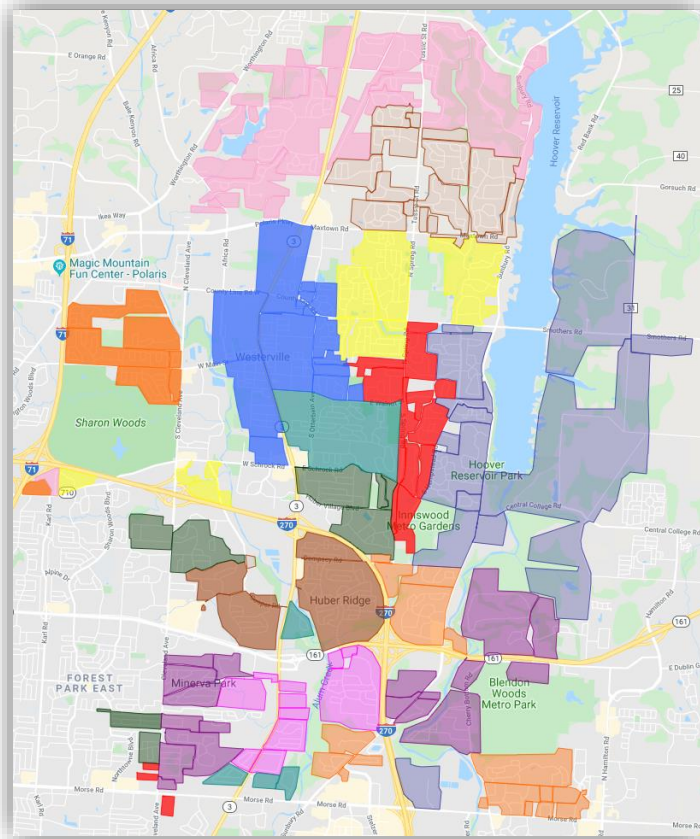
Schools	FY19 10/5/18	FY20 10/11/19		Starting Point
Blendon	716	726	All Enrollment	625
		34.9%	Econ Disadvantaged	33.4%
		43.4%, 56.6%	Minority/White	41.3%, 58.7%
Genoa	891	880	All Enrollment	667
		22.1%	Econ Disadvantaged	10.9%
		38.5%, 61.5%	Minority/White	27.3%, 72.7%
Heritage	960	906	All Enrollment	666
		48.1%	Econ Disadvantaged	45.3%
		54.8%, 45.2%	Minority/White	51.2%, 48.8%
New MS			All Enrollment	760
			Econ Disadvantaged	57.4%
			Minority/White	69.1%, 30.9%
Walnut Springs	942	939	All Enrollment	623
		40.7%	Econ Disadvantaged	28.3%
		48.1%, 51.9%	Minority/White	37.6%, 62.4%



Starting Points for the ESRC Committee

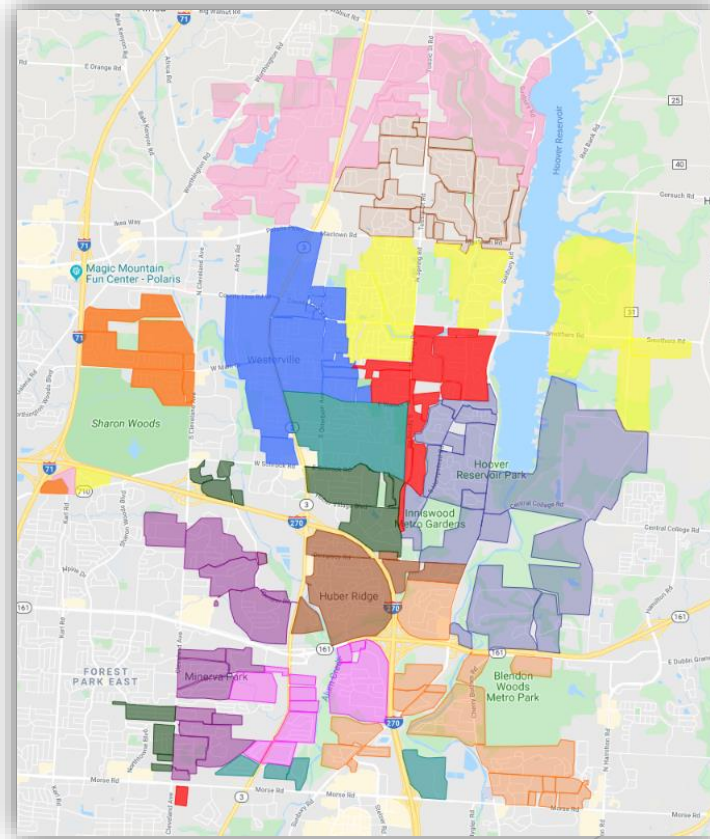
Elementary School

Starting Point Option 1



Elementary School

Starting Point Option 2



Data for Committees to Begin

Elementary School Option 1 Capacity and Demographic Data

Schools	FY19 10/5/18	FY20 10/11/19	FY20 ES HS 11/12/19	Building Capacity	Target Enrollment 90% - 95%		Starting Point
Alcott	555	548	516	600	(540 - 570)	All Enrollment	520
		20.1%				Econ Disadvantaged	16.9%
		30%, 70%				Minority/White	28.8%, 71.2%
Annehurst	410	403	455	450	(405 - 428)	All Enrollment	388
		38.2%				Econ Disadvantaged	35.8%
		54.3%, 45.7%				Minority/White	48.2%, 51.8%
Cherrington	451	408	425	450	(405 - 428)	All Enrollment	416
		37.8%				Econ Disadvantaged	45.7%
		43.6%, 56.4%				Minority/White	51%, 49%
Fouse	640	617	692	600	(540 - 570)	All Enrollment	615
		25.5%				Econ Disadvantaged	23.9%
		38.2%, 61.8%				Minority/White	37.4%, 62.6%
Hawthorne	731	768	901	600	(540 - 570)	All Enrollment	607
		57.2%				Econ Disadvantaged	50.6%
		71.5%, 28.5%				Minority/White	65.6%, 34.4%
Huber Ridge	556	540	604	600	(540 - 570)	All Enrollment	558
		55.6%				Econ Disadvantaged	51.8%
		53.1%, 46.9%				Minority/White	47.7%, 52.3%
Mark Twain	595	622	695	450	(405 - 428)	All Enrollment	418
		36.4%				Econ Disadvantaged	40.0%
		43.2%, 56.8%				Minority/White	47.1%, 52.9%
McVay	528	542	610	600	(540 - 570)	All Enrollment	489
2 new home developments		31.1%				Econ Disadvantaged	20.7%
		52.2%, 47.8%				Minority/White	31.9%, 68.1%
New ES				600	(540 - 570)	All Enrollment	633
						Econ Disadvantaged	53.8%
						Minority/White	73.3%, 26.7%
Pointview	327	336	370	375	(338 - 357)	All Enrollment	369
		69.3%				Econ Disadvantaged	62.3%
		66.7%, 33.3%				Minority/White	64.2%, 35.8%
Robert Frost	442	432	429	450	(405 - 428)	All Enrollment	439
		29.1%				Econ Disadvantaged	15.7%
		35%, 65%				Minority/White	25.3%, 74.7%
Whittier	343	374	393	425	(383 - 404)	All Enrollment	420
		18.3%				Econ Disadvantaged	20.0%
		24.3%, 75.7%				Minority/White	31.7%, 68.3%
Wilder	492	503	573	600	(540 - 570)	All Enrollment	587
new apt. developments		39.4%				Econ Disadvantaged	35.6%
		57.3%, 42.7%				Minority/White	53.3%, 46.7%

Elementary School Option 2 Capacity and Demographic Data

Schools	FY19 10/5/18	FY20 10/11/19	FY20 ES HS 11/12/19	Building Capacity	Target Enrollment 90% - 95%		Starting Point
Alcott	555	548	516	600	(540 - 570)	All Enrollment	520
		20.1%				Econ Disadvantaged	16.9%
		30%, 70%				Minority/White	28.8%, 71.2%
Annehurst	410	403	455	450	(405 - 428)	All Enrollment	388
		38.2%				Econ Disadvantaged	35.8%
		54.3%, 45.7%				Minority/White	48.2%, 51.8%
Cherrington	451	408	425	450	(405 - 428)	All Enrollment	478
		37.8%				Econ Disadvantaged	49.6%
		43.6%, 56.4%				Minority/White	56.9%, 43.1%
Fouse	640	617	692	600	(540 - 570)	All Enrollment	615
		25.5%				Econ Disadvantaged	23.9%
		38.2%, 61.8%				Minority/White	37.4%, 62.6%
Hawthorne	731	768	901	600	(540 - 570)	All Enrollment	597
		57.2%				Econ Disadvantaged	69.5%
		71.5%, 28.5%				Minority/White	75.4%, 24.6%
Huber Ridge	556	540	604	600	(540 - 570)	All Enrollment	512
		55.6%				Econ Disadvantaged	43.7%
		53.1%, 46.9%				Minority/White	42%, 58%
Mark Twain	595	622	695	450	(405 - 428)	All Enrollment	489
		36.4%				Econ Disadvantaged	31.9%
		43.2%, 56.8%				Minority/White	35.8%, 64.2%
McVay	528	542	610	600	(540 - 570)	All Enrollment	523
2 new home developments		31.1%				Econ Disadvantaged	26.8%
		52.2%, 47.8%				Minority/White	44.2%, 55.8%
New ES				600	(540 - 570)	All Enrollment	633
						Econ Disadvantaged	53.8%
						Minority/White	73.3%, 26.7%
Pointview	327	336	370	375	(338 - 357)	All Enrollment	343
		69.3%				Econ Disadvantaged	62.4%
		66.7%, 33.3%				Minority/White	61.2%, 38.8%
Robert Frost	442	432	429	450	(405 - 428)	All Enrollment	431
		29.1%				Econ Disadvantaged	11.6%
		35%, 65%				Minority/White	23%, 77%
Whittier	343	374	393	425	(383 - 404)	All Enrollment	420
		18.3%				Econ Disadvantaged	20.0%
		24.3%, 75.7%				Minority/White	31.7%, 68.3%
Wilder	492	503	573	600	(540 - 570)	All Enrollment	568
new apt. developments		39.4%				Econ Disadvantaged	32.2%
		57.3%, 42.7%				Minority/White	50.4%, 49.6%



Board Meetings & Committee Work Sessions

- ▶ First Reading Policy & Resolution - BOE Mtg. - January 27, 2020
- ▶ Final Reading Policy & Resolution - BOE Mtg. - February 10, 2020
- ▶ Kick Off Meeting - All Elem. & M.S. Realignment Committee Members - February 18, 2020
- ▶ First Meeting Elem. & M.S. Committees - March 2, 2020
- ▶ Postponement Due to Pandemic - March 16, 2020
- ▶ Second Meeting Elem. & M.S. Committees - October 13, 2020
- ▶ Third Meeting Elem. & M.S. Committees - October 20, 2020
- ▶ Recommendation Meeting for Community Feedback - November 2, 2020
- ▶ Community Feedback Solicited November 16 - December 7, 2020
- ▶ Fourth (Additional) Meeting Elem. Committee Only - November 12, 2020
- ▶ Final Recommendation Meeting - January 19, 2021
- ▶ First Reading - BOE Mtg. - February 22, 2021



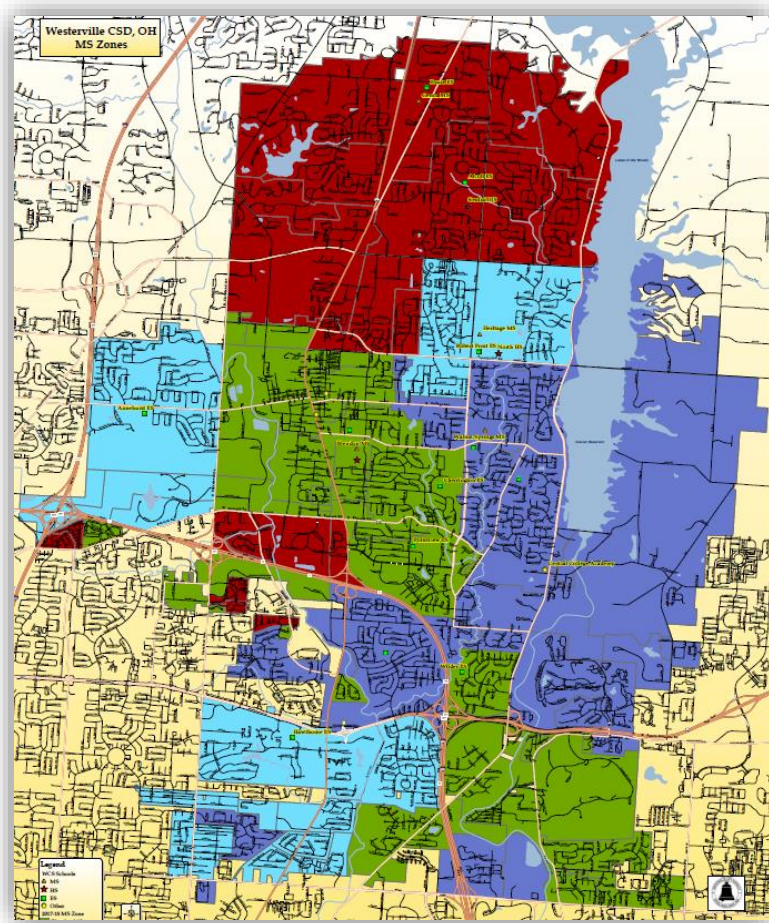
Boundary Realignment Virtual Gallery Walk Presentation for Community Feedback

Solicited community feedback November 16, 2020 through December 7, 2020

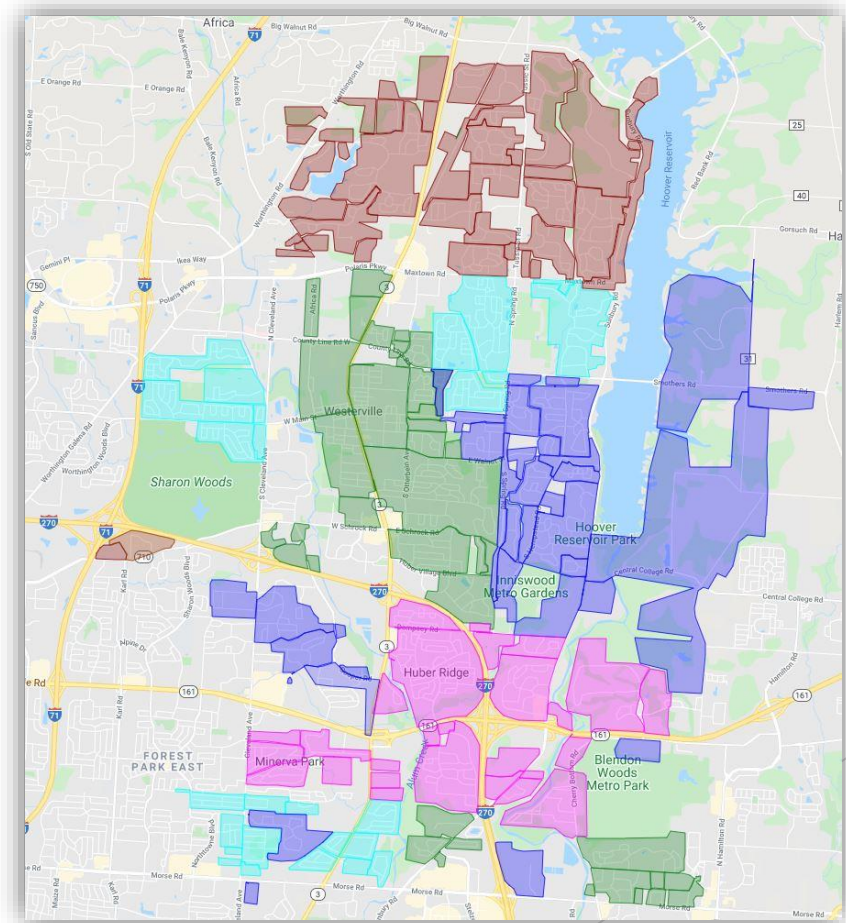


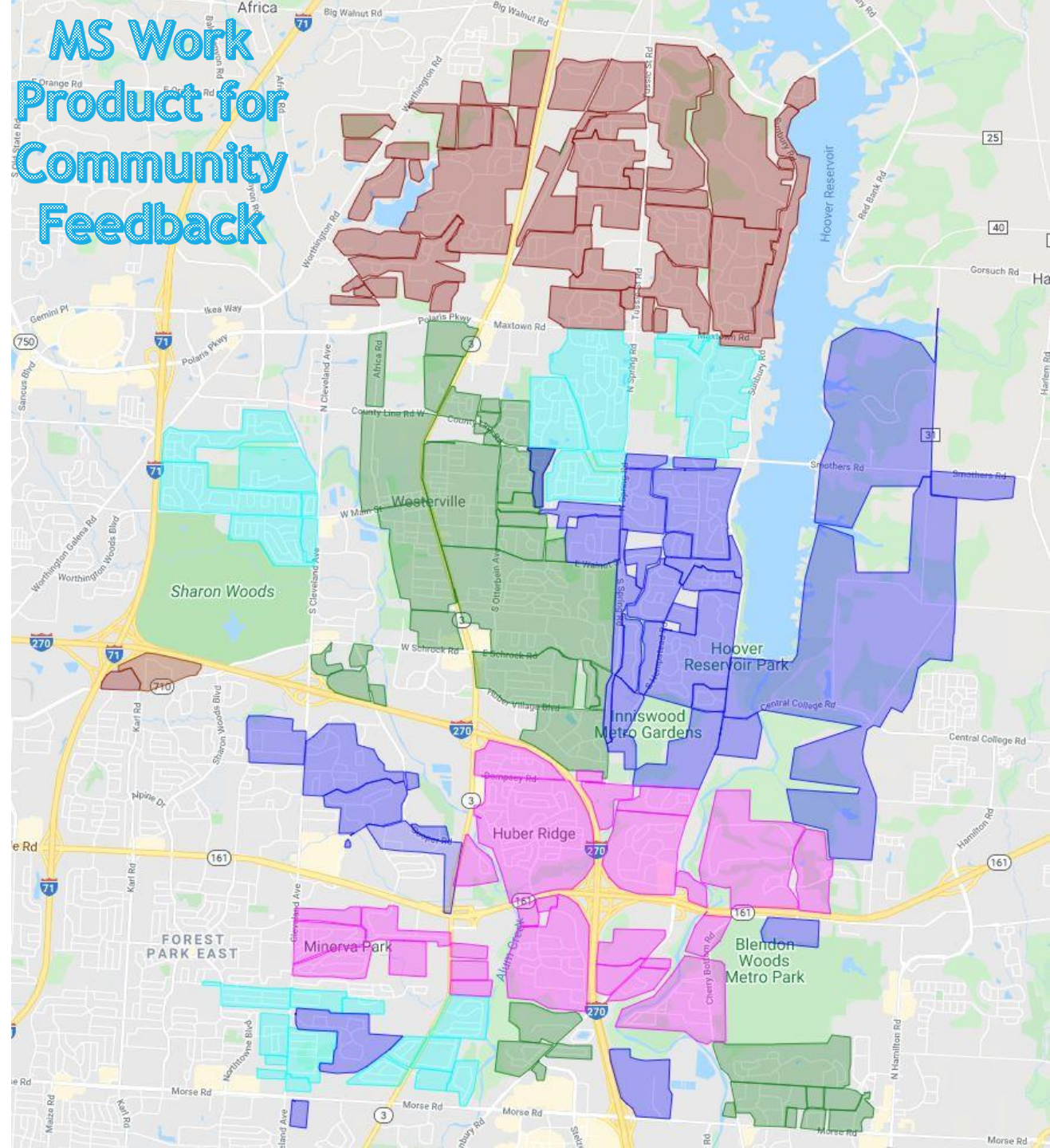
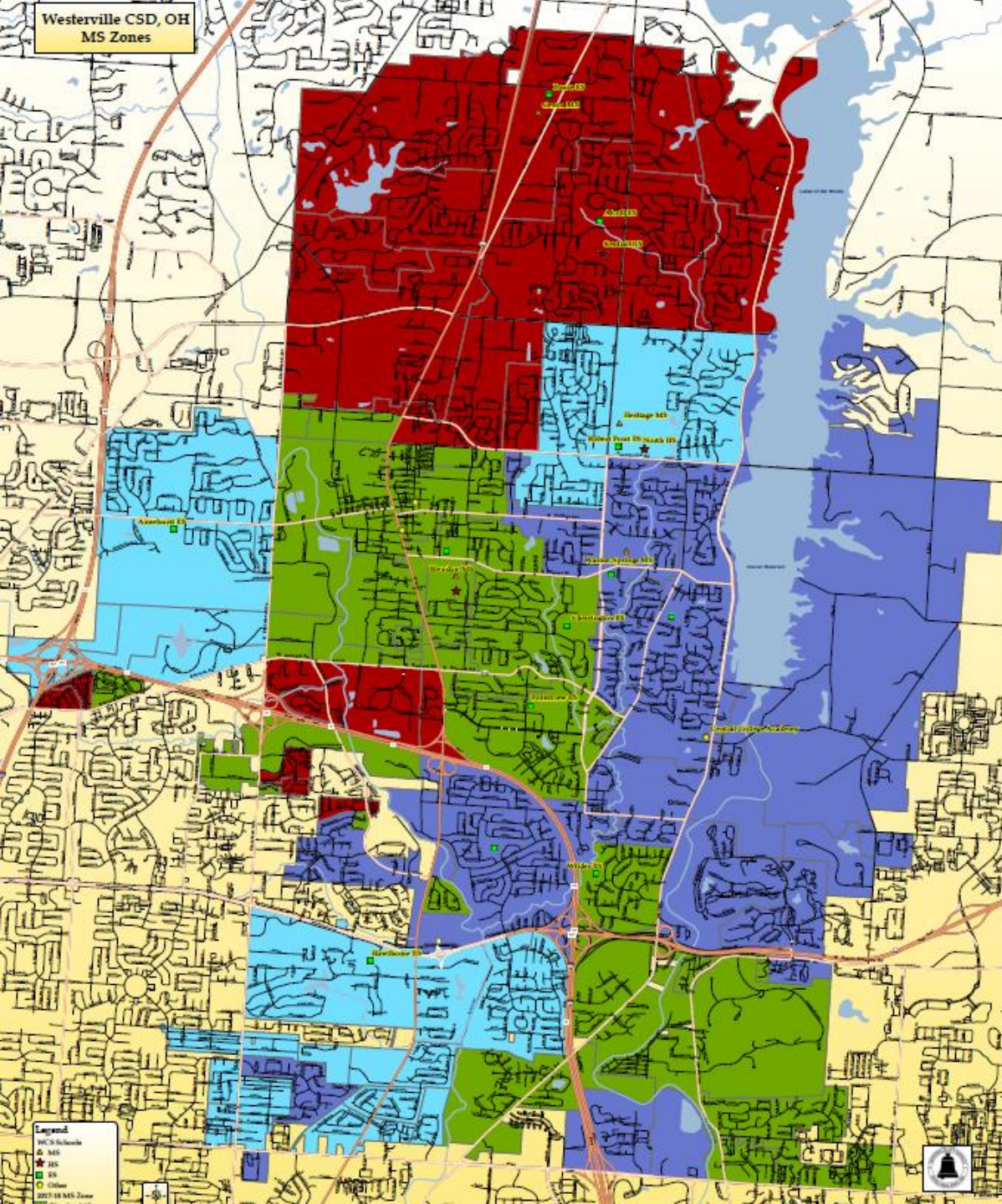
MSRC Work Product for Community Feedback

Existing MS Boundaries



MS Boundaries for Feedback





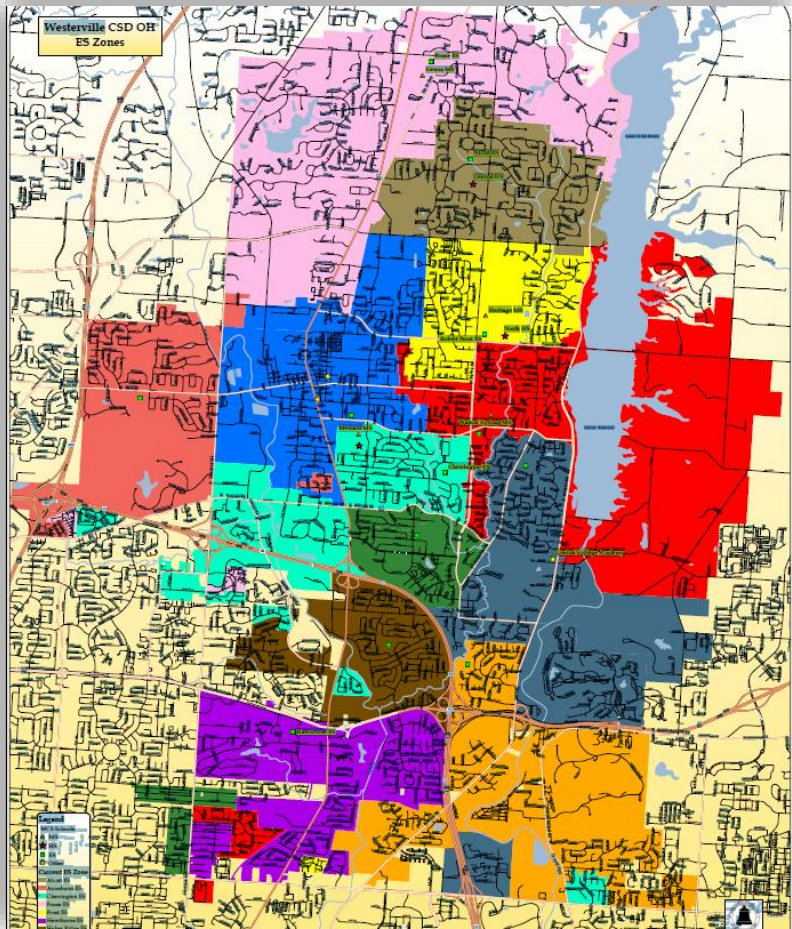
MSRC
Work Product
for
Community
Feedback
Demographic
Profile
Data Sheet

Schools		2019-2020	Proposed
Blendon	All Enrollment	726	569
	Econ Disadvantaged	34.9%	33.4%
	Minority/White	43.4%, 56.6%	40.2%, 59.8%
Genoa	All Enrollment	880	736
	Econ Disadvantaged	22.1%	18.2%
	Minority/White	38.5%, 61.5%	33.7%, 66.3%
Heritage	All Enrollment	906	664
	Econ Disadvantaged	48.1%	43.4%
	Minority/White	54.8%, 45.2%	49.1%, 50.9%
New MS	All Enrollment		714
	Econ Disadvantaged		44.8%
	Minority/White		55%, 45%
Walnut Springs	All Enrollment	939	665
	Econ Disadvantaged	40.7%	40.6%%
	Minority/White	48.1%, 51.9%	52.5%, 47.5%

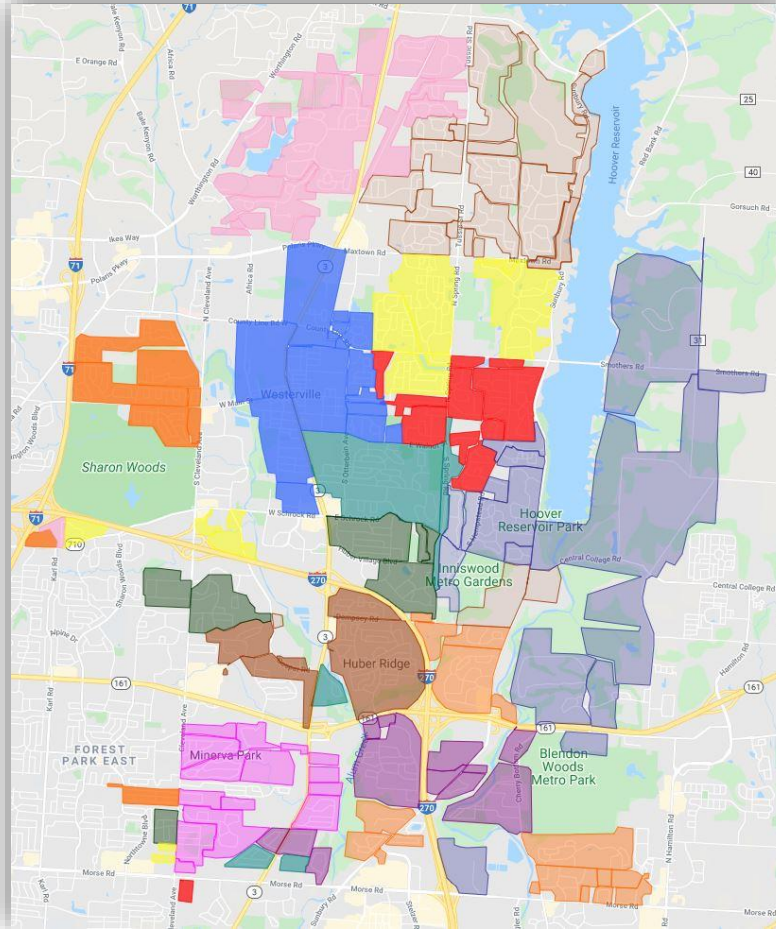


ESRC Work Product for Community Feedback

Existing ES Boundaries



ES Boundaries for Feedback



ESRC Work Product for Community Feedback Demographic Profile Data Sheet

Schools	Building Capacity	Target Enrollment 90% - 95%		2019-2020	Proposed
Alcott	600	(540 - 570)	All Enrollment	548	596
			Econ Disadvantaged	20.1%	17.1%
			Minority/White	30%, 70%	30.2%, 69.8%
Annehurst	450	(405 - 428)	All Enrollment	403	445
			Econ Disadvantaged	38.2%	42.7%
			Minority/White	54.3%, 45.7%	54.6%, 45.4%
Cherrington	450	(405 - 428)	All Enrollment	408	420
			Econ Disadvantaged	37.8%	41.7%
			Minority/White	43.6%, 56.4%	47.1%, 52.9%
Fouse	600	(540 - 570)	All Enrollment	617	572
			Econ Disadvantaged	25.5%	25.5%
			Minority/White	38.2%, 61.8%	38.1%, 61.9%
Hawthorne	600	(540 - 570)	All Enrollment	768	529
			Econ Disadvantaged	57.2%	52.4%
			Minority/White	71.5%, 28.5%	68.1%, 31.9%
Huber Ridge	600	(540 - 570)	All Enrollment	540	558
			Econ Disadvantaged	55.6%	51.8%
			Minority/White	53.1%, 46.9%	47.7%, 52.3%
Mark Twain	450	(405 - 428)	All Enrollment	622	477
			Econ Disadvantaged	36.4%	31.0%
			Minority/White	43.2%, 56.8%	26.3%, 63.7%
McVay 2 new home deveopments	600	(540 - 570)	All Enrollment	542	556
			Econ Disadvantaged	31.1%	27.2%
			Minority/White	52.2%, 47.8%	46.2%, 53.8%
New ES	600	(540 - 570)	All Enrollment		546
			Econ Disadvantaged		59.5%
			Minority/White		74.7%, 25.3%
Pointview	375	(338 - 357)	All Enrollment	336	312
			Econ Disadvantaged	69.3%	57.3%
			Minority/White	66.7%, 33.3%	54.8%, 45.2%
Robert Frost	450	(405 - 428)	All Enrollment	432	442
			Econ Disadvantaged	29.1%	19.7%
			Minority/White	35%, 65%	28.1%, 71.9%
Whittier	425	(383 - 404)	All Enrollment	374	420
			Econ Disadvantaged	18.3%	20.0%
			Minority/White	24.3%, 75.7%	31.7%, 68.3%
Wilder new apt. deveopments	600	(540 - 570)	All Enrollment	503	587
			Econ Disadvantaged	39.4%	35.6%
			Minority/White	57.3%, 42.7%	53.3%, 46.7%



Community Feedback

The District solicited feedback on the ESRC and MSRC current work products November 16 through December 7, 2020. There were 117 submissions regarding elementary school boundaries. More than half of the submissions were related to Mark Twain ES. There were 96 submissions for the middle school boundaries.

Submission Counts by Elementary School of Residence or Greatest Interest: Alcott ES - 2, Annehurst - 0, Cherrington ES - 15, Fouse ES - 1, Hawthorne ES - 4, Huber Ridge - 0, **Mark Twain ES - 61**, McVay ES - 12, Pointview ES - 1, Robert Frost ES - 2, Whittier ES - 12, Wilder ES - 11

Submission Counts by Middle School of Residence or Greatest Interest: Blendon MS - 25, Genoa MS - 30, Heritage MS - 26, Walnut Springs MS - 23

▶ Elementary School Themes

- ▶ Reconsider Building Diversity Ratios
- ▶ Reconsider Proximity to Schools
- ▶ Cherrington ES - Keep neighborhoods 1112 - 1115 at Cherrington ES
- ▶ Mark Twain ES - Keep neighborhood 1083/Freedom Colony at Mark Twain ES; do not split neighborhoods 1047 and 1045/Spring Grove
- ▶ Whittier ES - Keep neighborhood 1053 at Whittier ES

▶ Middle School Themes

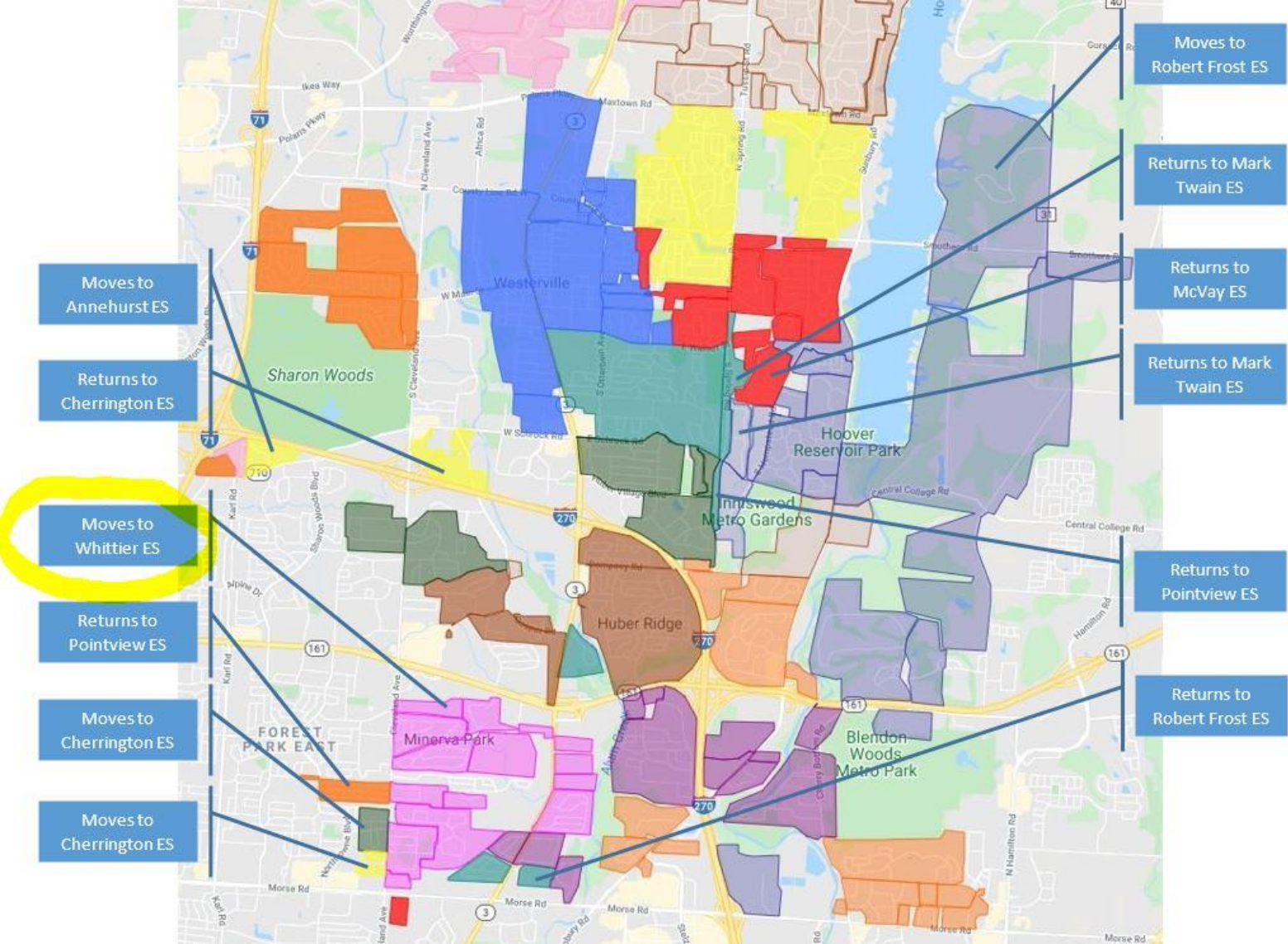
- ▶ Reconsider Building Diversity Ratios
- ▶ Reconsider Proximity to Schools
- ▶ Blendon MS/Genoa MS - Send Heritage Estates to Blendon and Keep at Genoa



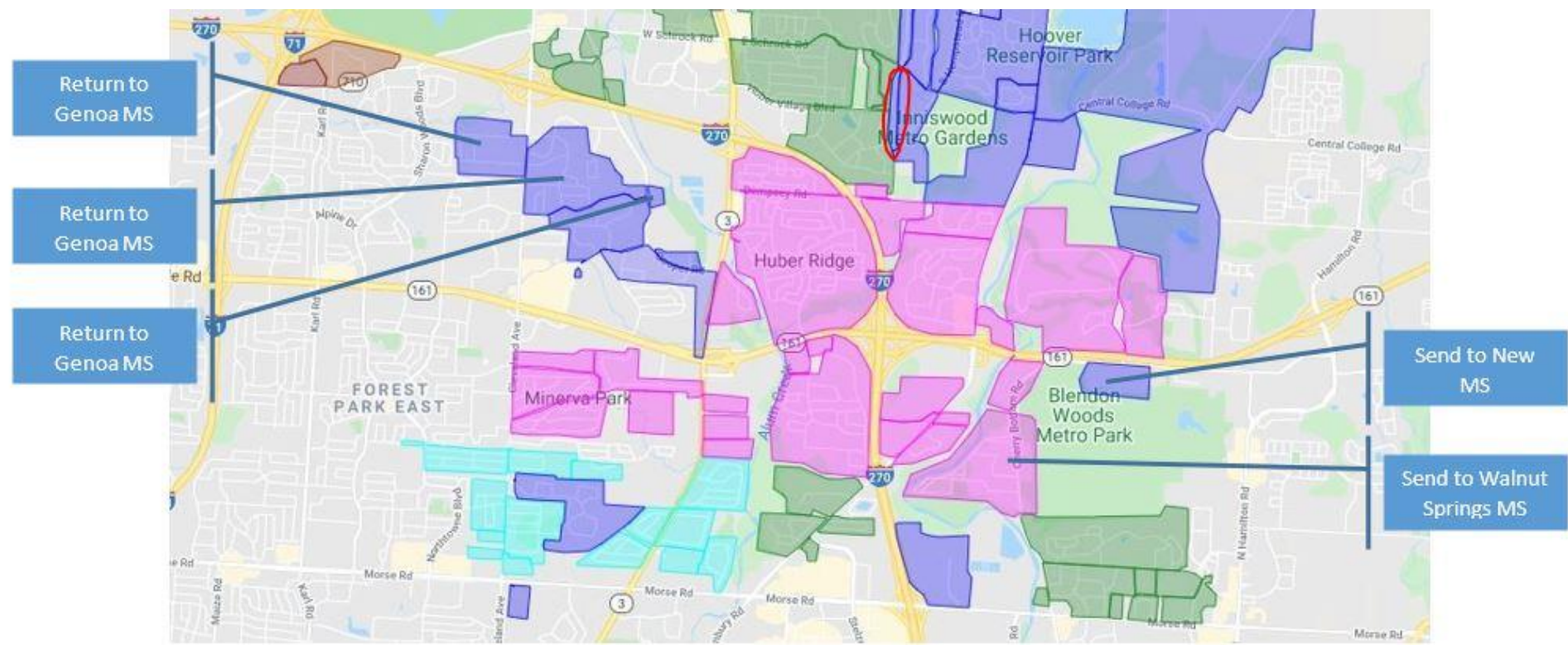
Highlighted Changes in Response to Community Feedback.



Suggested ES Changes After Community Feedback



Suggested MS Changes After Community Feedback



Recommended Committee Work Products

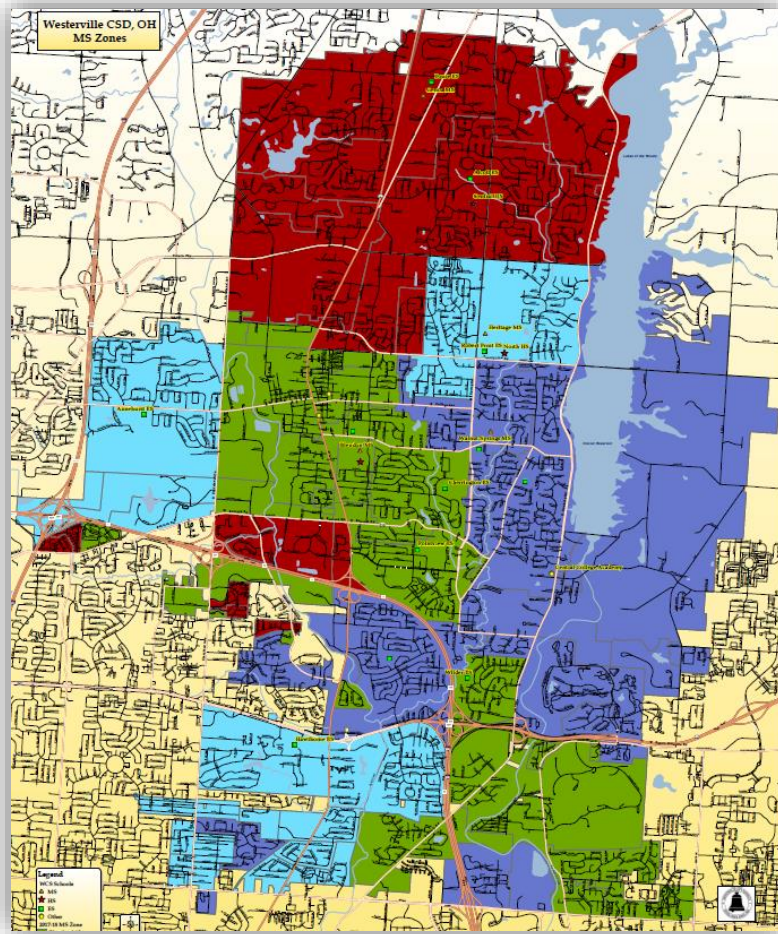
- After the January 19, 2021 Final Committee Work Session
- The Recommendation Meeting



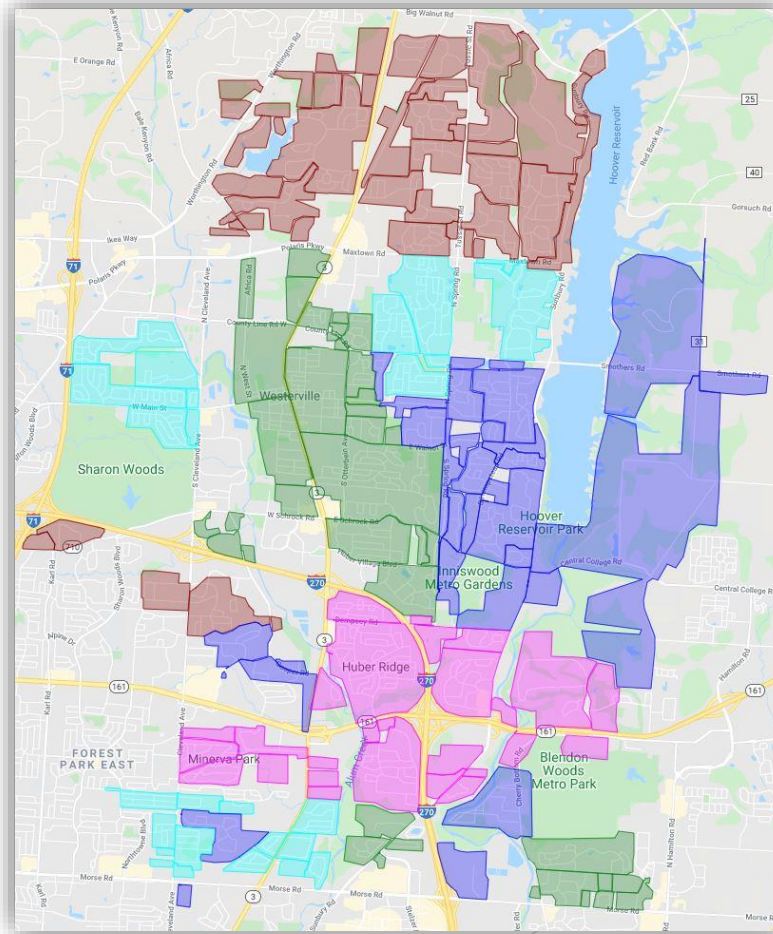
Middle School Recommendations

(a larger view is located on the next screen)

Existing MS Boundaries



Recommended MS Boundaries



Recommended
MSRC
Work Product
Demographic
Profile
Data Sheet

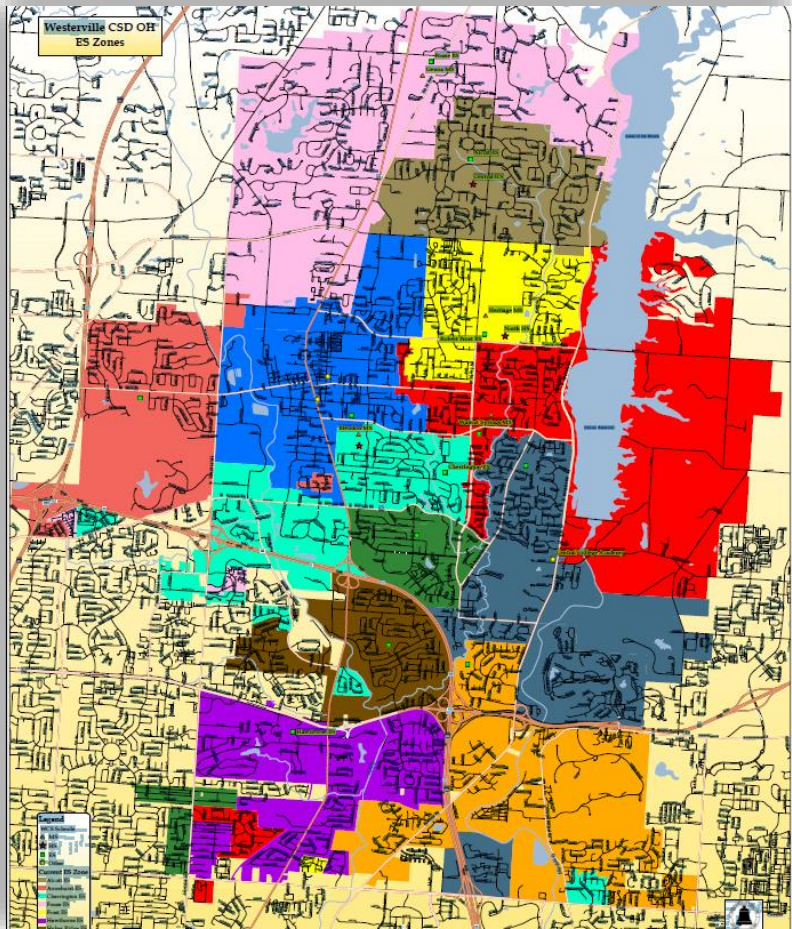
Schools		2019-2020	Proposed For Feedback	After Feedback Alterations	Final Recommendation
Blendon	All Enrollment	726	569	569	570
	Econ Disadvantaged	34.9%	33.4%	33.4%	33.3%
	Minority/White	43.4%, 56.6%	40.2%, 59.8%	40.2%, 59.8%	40.2%, 59.8%
Genoa	All Enrollment	880	736	813	813
	Econ Disadvantaged	22.1%	18.2%	23.6%	23.6%
	Minority/White	38.5%, 61.5%	33.7%, 66.3%	38.7%, 61.3%	38.7%, 61.3%
Heritage	All Enrollment	906	664	664	664
	Econ Disadvantaged	48.1%	43.4%	43.4%	43.4%
	Minority/White	54.8%, 45.2%	49.1%, 50.9%	49.1%, 50.9%	49.1%, 50.9%
New MS	All Enrollment		714	698	698
	Econ Disadvantaged		44.8%	45.0%	45.0%
	Minority/White		55%, 45%	55.2%, 44.8%	55.2%, 44.8%
Walnut Springs	All Enrollment	939	665	604	604
	Econ Disadvantaged	40.7%	40.6%	36.1%	36.1%
	Minority/White	48.1%, 51.9%	52.5%, 47.5%	48.0%, 52.0%	48.0%, 52.0%



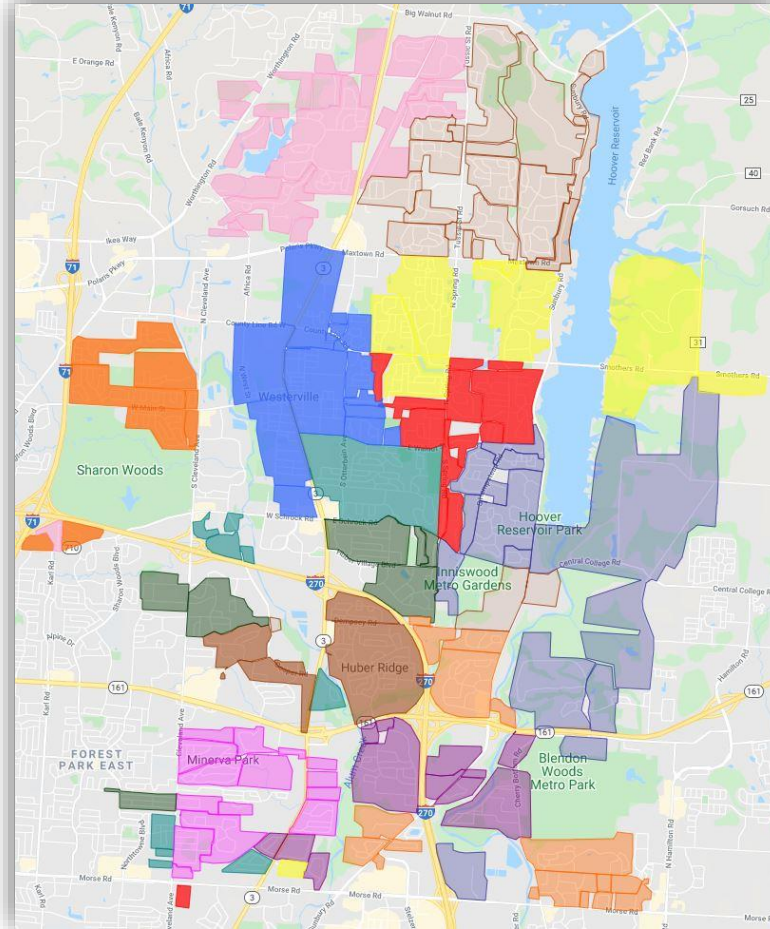
Elementary School Recommendations

(a larger view is located on the next screen)

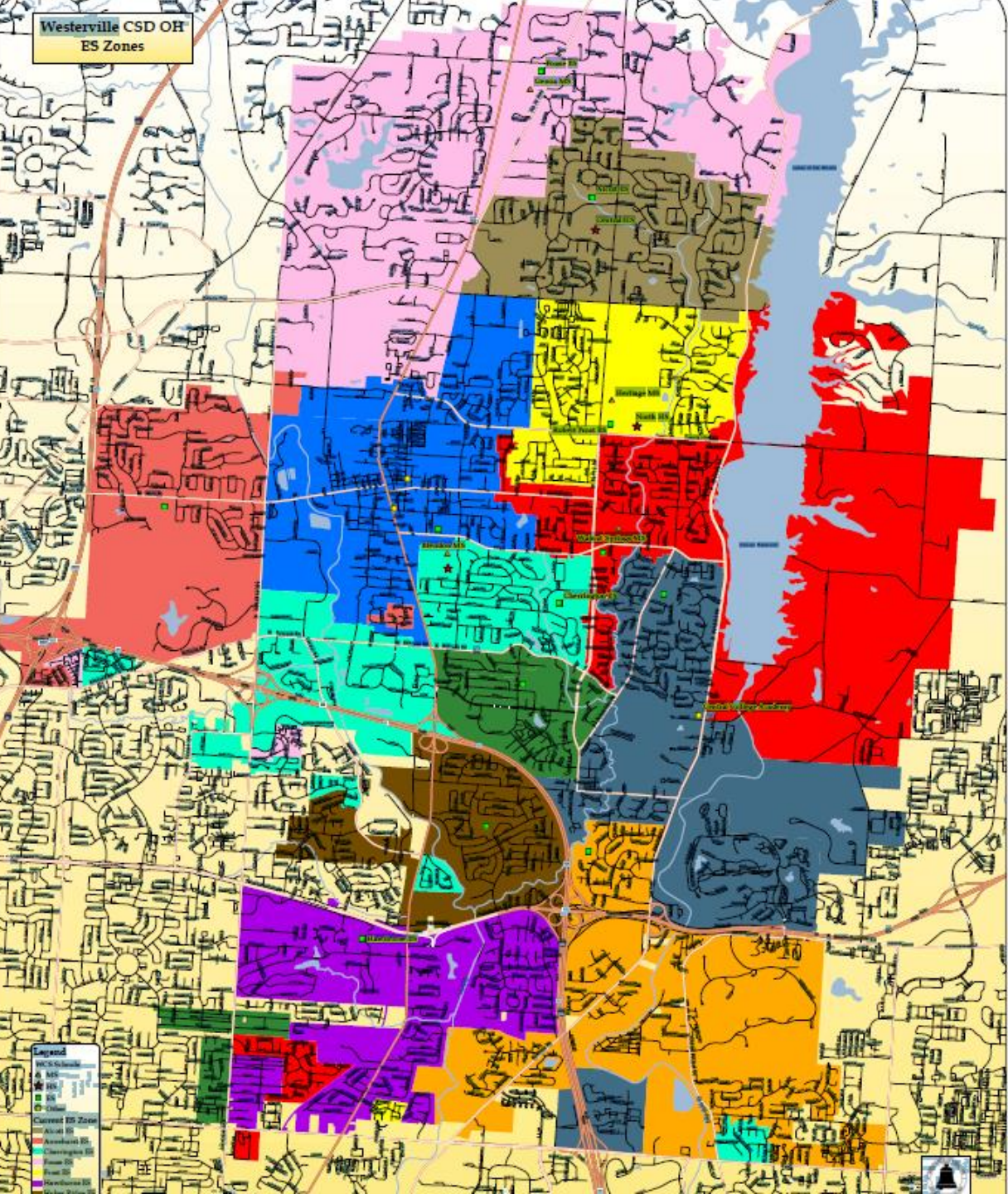
Existing ES Boundaries



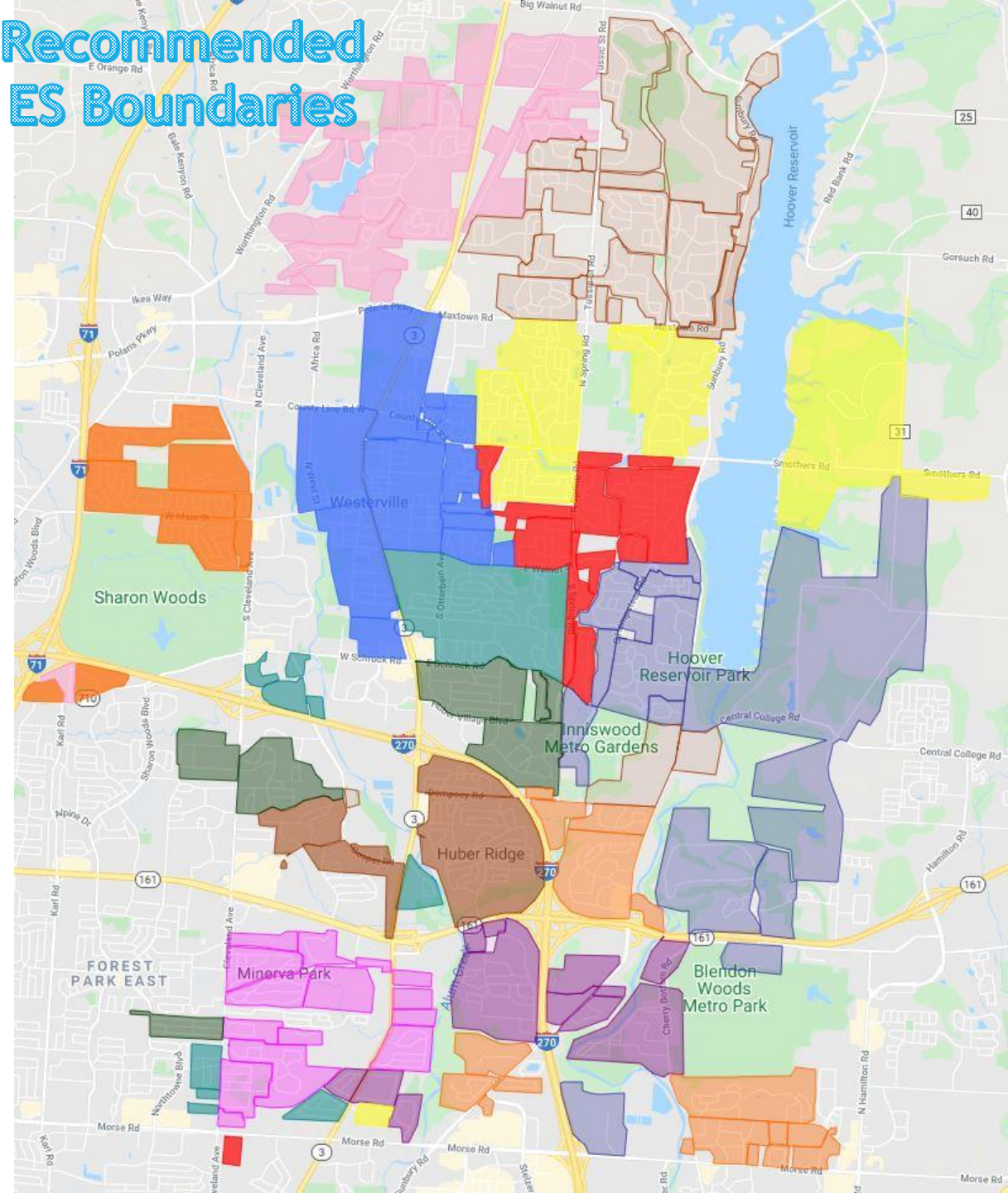
Recommended ES Boundaries



Westerville CSD OH ES Zones



Recommended ES Boundaries



Recommended ESRC Work Product Demographic Profile Data Sheet

Schools		2019-2020	Proposed For Feedback	Final Recommendation
Alcott	All Enrollment	548	596	596
	Econ Disadvantaged	20.1%	17.1%	17.1%
	Minority/White	30%, 70%	30.2%, 69.8%	30.2%, 69.8%
Annehurst	All Enrollment	403	445	408
	Econ Disadvantaged	38.2%	42.7%	38.2%
	Minority/White	54.3%, 45.7%	54.6%, 45.4%	50.7%, 49.3%
Cherrington	All Enrollment	408	420	400
	Econ Disadvantaged	37.8%	41.7%	42.0%
	Minority/White	43.6%, 56.4%	47.1%, 52.9%	46.5%, 53.5%
Fouse	All Enrollment	617	572	572
	Econ Disadvantaged	25.5%	25.5%	25.5%
	Minority/White	38.2%, 61.8%	38.1%, 61.9%	38.1%, 61.9%
Hawthorne	All Enrollment	768	529	529
	Econ Disadvantaged	57.2%	52.4%	52.4%
	Minority/White	71.5%, 28.5%	68.1%, 31.9%	68.1%, 31.9%
Huber Ridge	All Enrollment	540	558	558
	Econ Disadvantaged	55.6%	51.8%	51.8%
	Minority/White	53.1%, 46.9%	47.7%, 52.3%	47.7%, 52.3%
Mark Twain	All Enrollment	622	477	502
	Econ Disadvantaged	36.4%	31.0%	30.5%
	Minority/White	43.2%, 56.8%	36.3%, 63.7%	35.3%, 64.7%
McVay 2 new home developments	All Enrollment	542	556	539
	Econ Disadvantaged	31.1%	27.2%	27.1%
	Minority/White	52.2%, 47.8%	46.2%, 53.8%	47.3%, 52.7%
New ES	All Enrollment		546	546
	Econ Disadvantaged		59.5%	59.5%
	Minority/White		74.7%, 25.3%	74.7%, 25.3%
Pointview	All Enrollment	336	312	328
	Econ Disadvantaged	69.3%	57.3%	58.5%
	Minority/White	66.7%, 33.3%	54.8%, 45.2%	57.0%, 43.0%
Robert Frost	All Enrollment	432	442	481
	Econ Disadvantaged	29.1%	19.7%	23.9%
	Minority/White	35%, 65%	28.1%, 71.9%	32.6%, 67.4%
Whittier	All Enrollment	374	420	420
	Econ Disadvantaged	18.3%	20.0%	20.0%
	Minority/White	24.3%, 75.7%	31.7%, 68.3%	31.7%, 68.3%
Wilder new apt. developments	All Enrollment	503	587	587
	Econ Disadvantaged	39.4%	35.6%	35.6%
	Minority/White	57.3%, 42.7%	53.3%, 46.7%	53.3%, 46.7%



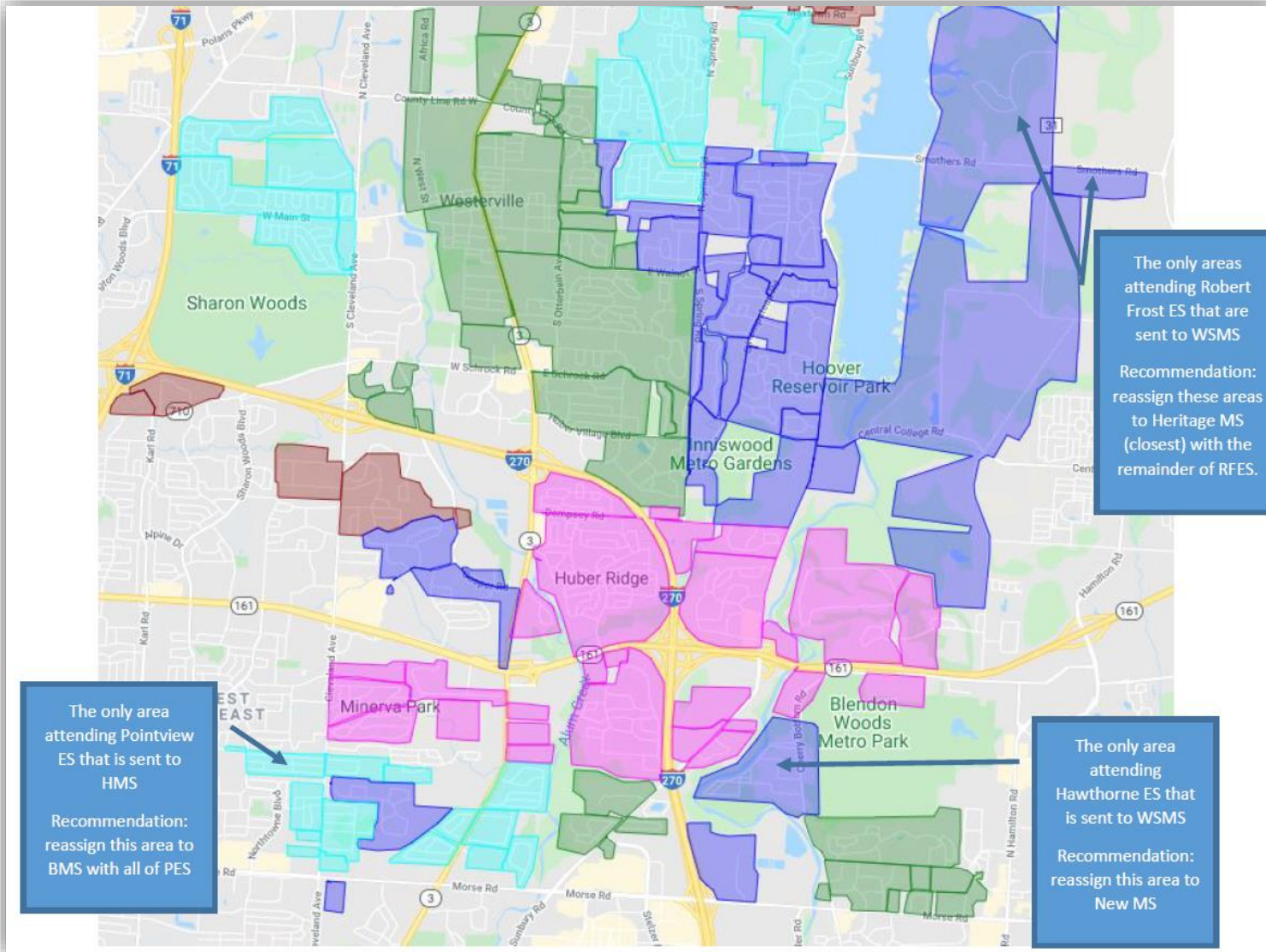
Minor Vertical Alignment Adjustments

Identified After the Committees' Recommendations by
Members of the PDC

- ▶ 1100-1101: These two neighborhoods are the only portion of Alcott ES assigned to Walnut Springs MS. Recommendation - reassign these neighborhoods from Alcott ES to McVay ES (current).
- ▶ 1094-1095: These two neighborhoods are the only portion of Robert Frost ES assigned to Walnut Springs MS. Recommendation - reassign these neighborhoods from Walnut Springs MS to Heritage MS (closest).
- ▶ 1131: This neighborhood is the only portion of Hawthorne ES going to Walnut Springs MS. Recommendation - reassign this neighborhood from Walnut Springs MS to the New MS (closest).
- ▶ 1154: This neighborhood is the only portion of Pointview ES going to Heritage MS. Recommendation - reassign this neighborhood from Heritage MS to Blendon MS.

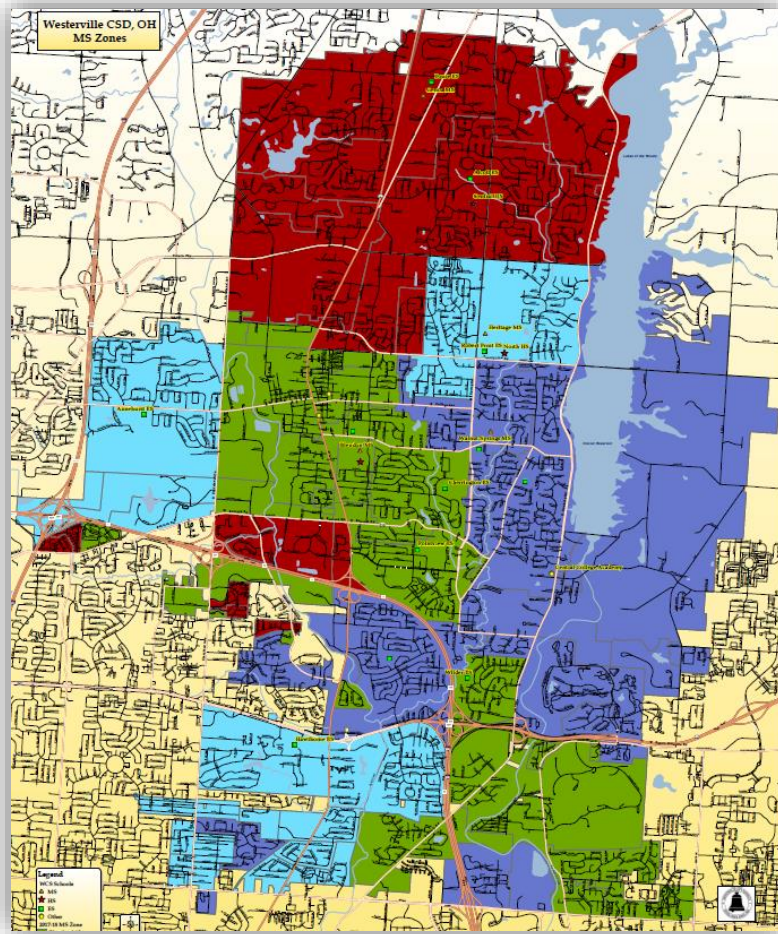


Minor Vertical Alignment MS Adjustments

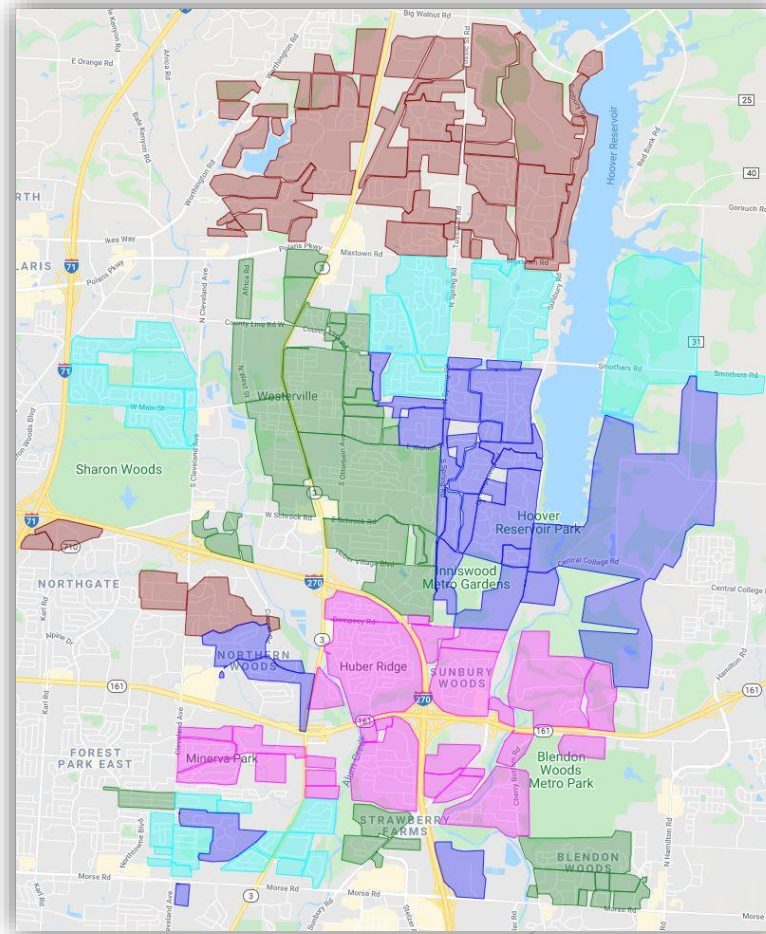


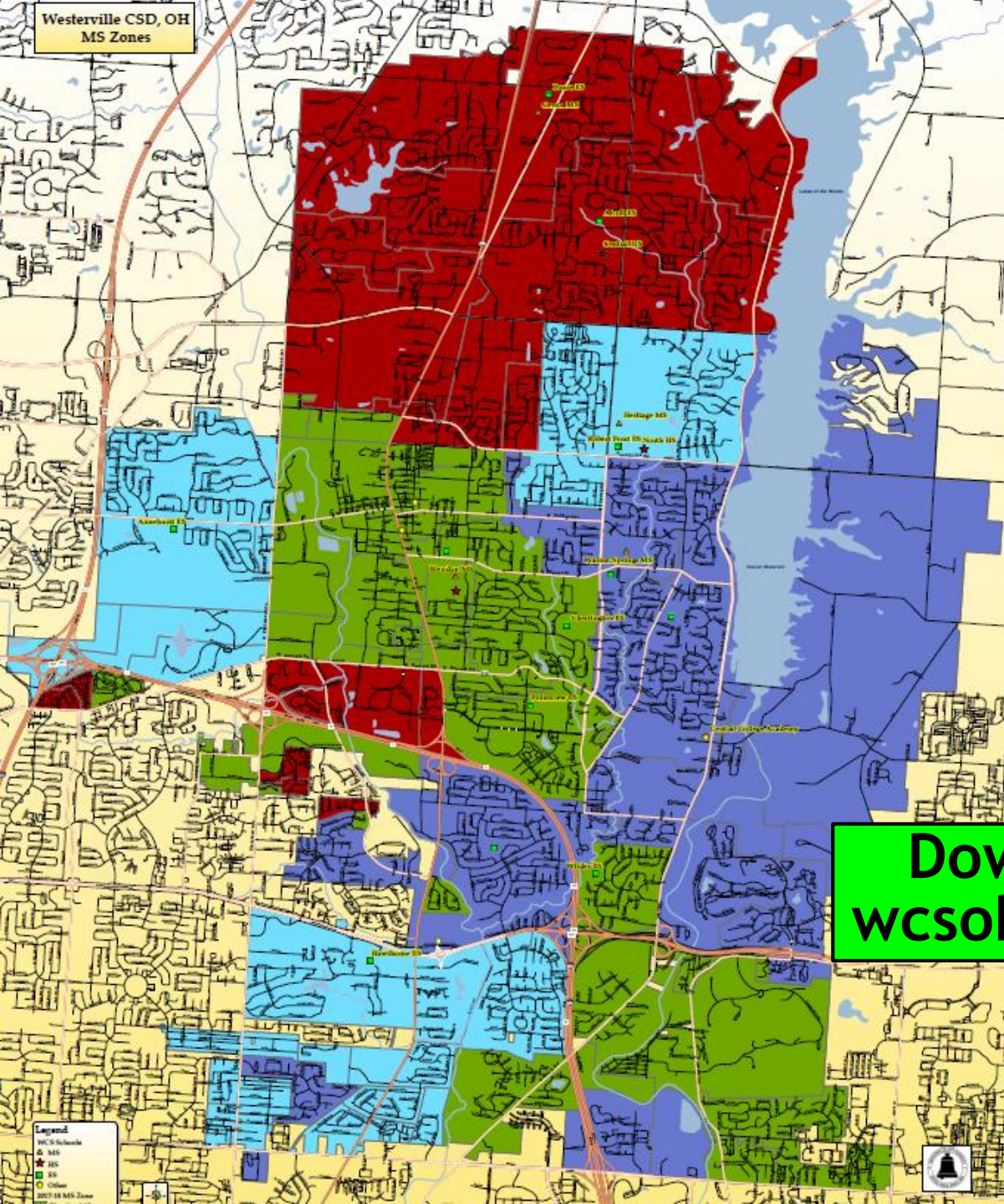
Middle School Recommendations (after vertical alignment adjustments)

Existing MS Boundaries

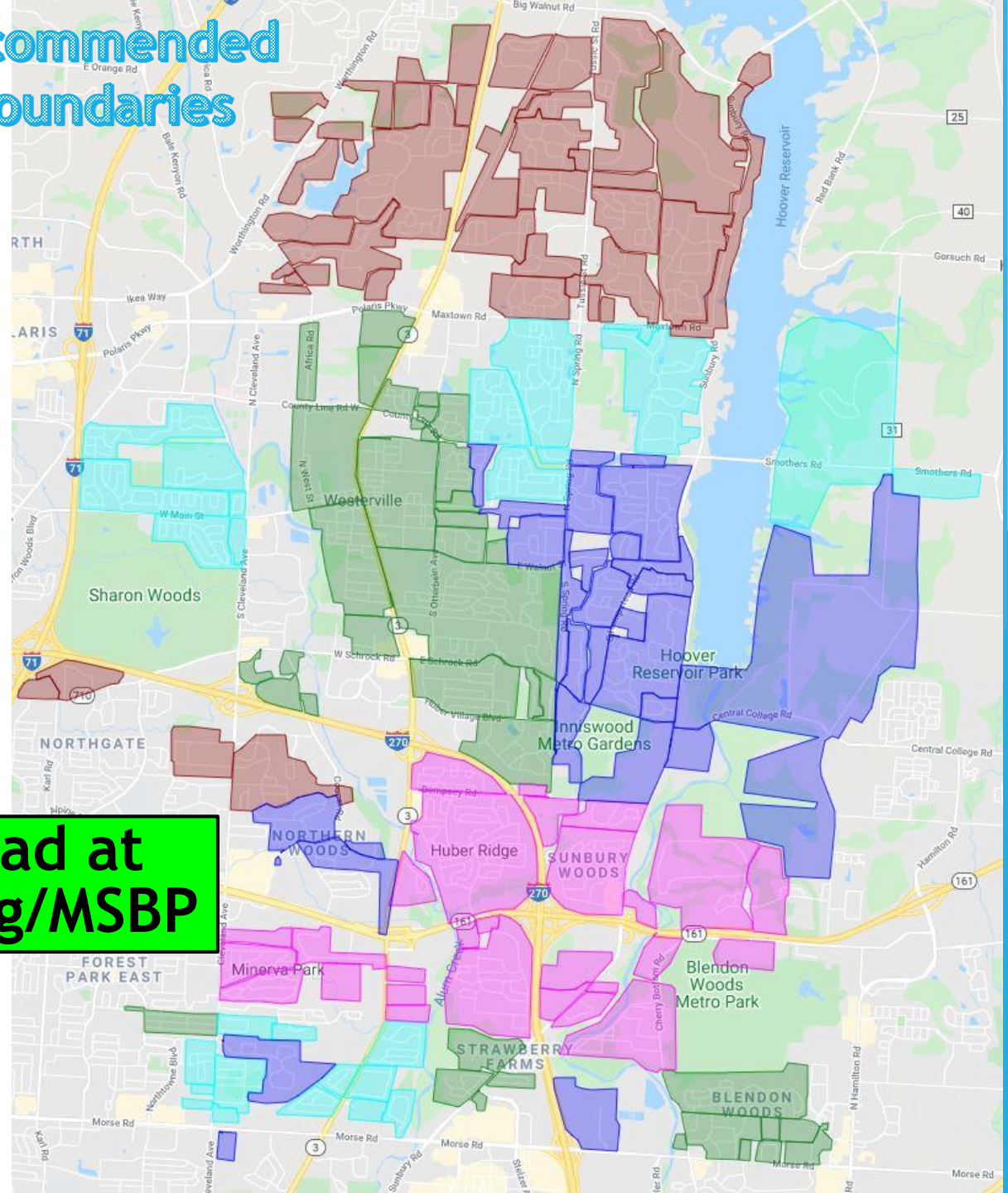


Recommended MS Boundaries





Recommended Boundaries



Download at
wcsoh.org/MSBP

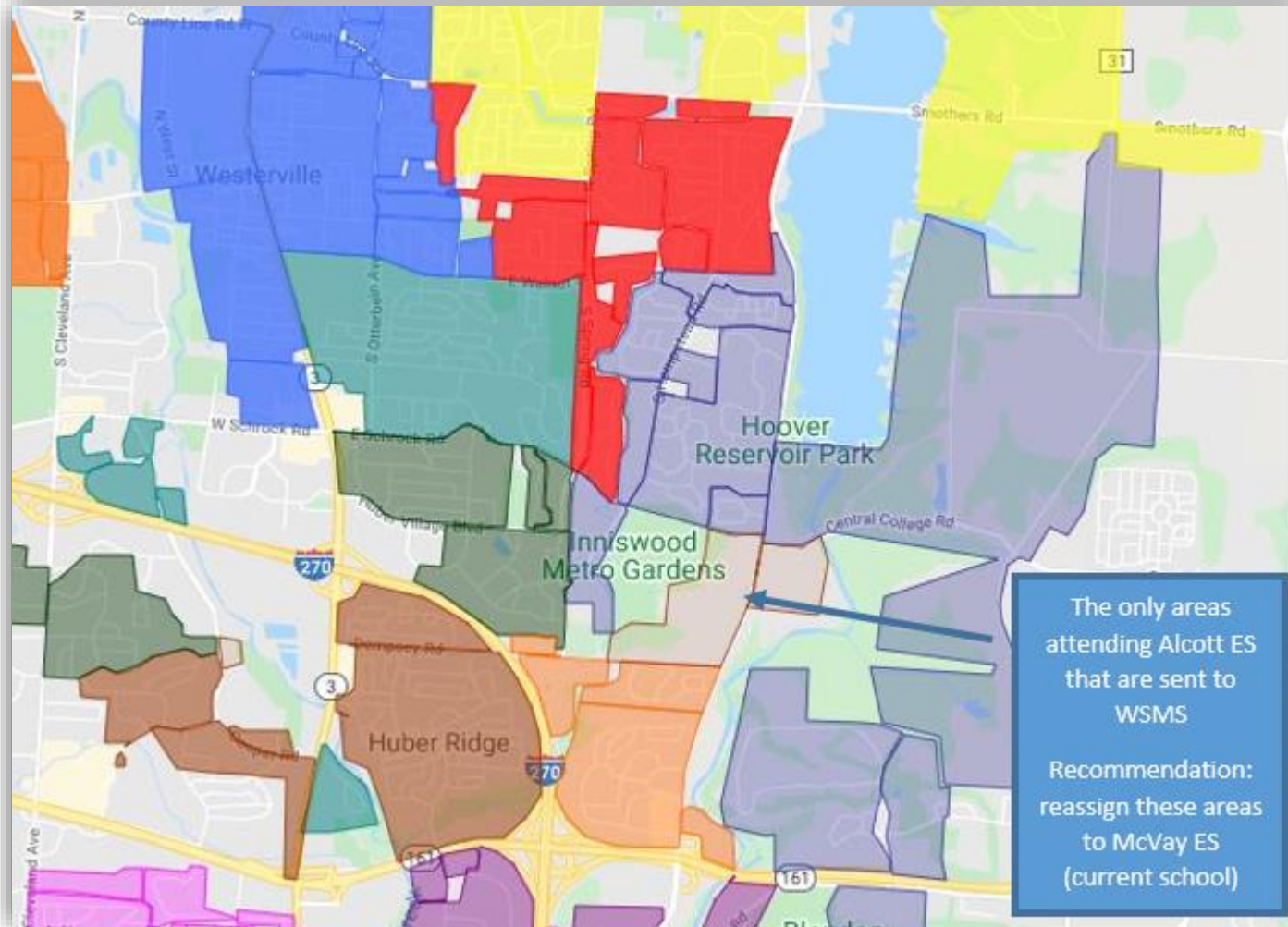
Recommended
MSRC
Work Product
Demographic
Profile
Data Sheet

Download at
wcsoh.org/MSBP

Schools		2019-2020	Proposed For Feedback	After Feedback Alterations	Initial Committee Recommendation	Alignment Corrections Final Recommendation
Blendon	All Enrollment	726	569	569	570	601
	Econ Disadvantaged	34.9%	33.4%	33.4%	33.3%	35.8%
	Minority/White	43.4%, 56.6%	40.2%, 59.8%	40.2%, 59.8%	40.2%, 59.8%	42.4%, 57.6%
Genoa	All Enrollment	880	736	813	813	813
	Econ Disadvantaged	22.1%	18.2%	23.6%	23.6%	23.6%
	Minority/White	38.5%, 61.5%	33.7%, 66.3%	38.7%, 61.3%	38.7%, 61.3%	38.7%, 61.3%
Heritage	All Enrollment	906	664	664	664	645
	Econ Disadvantaged	48.1%	43.4%	43.4%	43.4%	40.9%
	Minority/White	54.8%, 45.2%	49.1%, 50.9%	49.1%, 50.9%	49.1%, 50.9%	46.8%, 53.2%
New MS	All Enrollment		714	698	698	718
	Econ Disadvantaged		44.8%	45.0%	45.0%	45.0%
	Minority/White		55%, 45%	55.2%, 44.8%	55.2%, 44.8%	55.2%, 44.8%
Walnut Springs	All Enrollment	939	665	604	604	572
	Econ Disadvantaged	40.7%	40.6%	36.1%	36.1%	36.4%
	Minority/White	48.1%, 51.9%	52.5%, 47.5%	48.0%, 52.0%	48.0%, 52.0%	48.4%, 51.6%



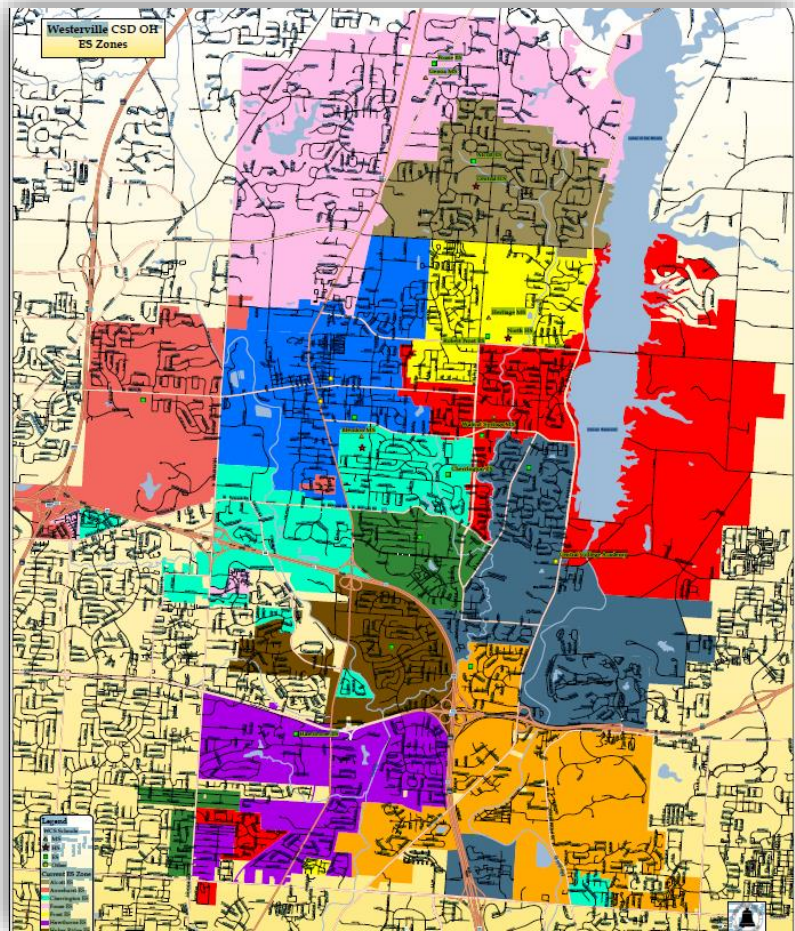
Minor Vertical Alignment ES Adjustments



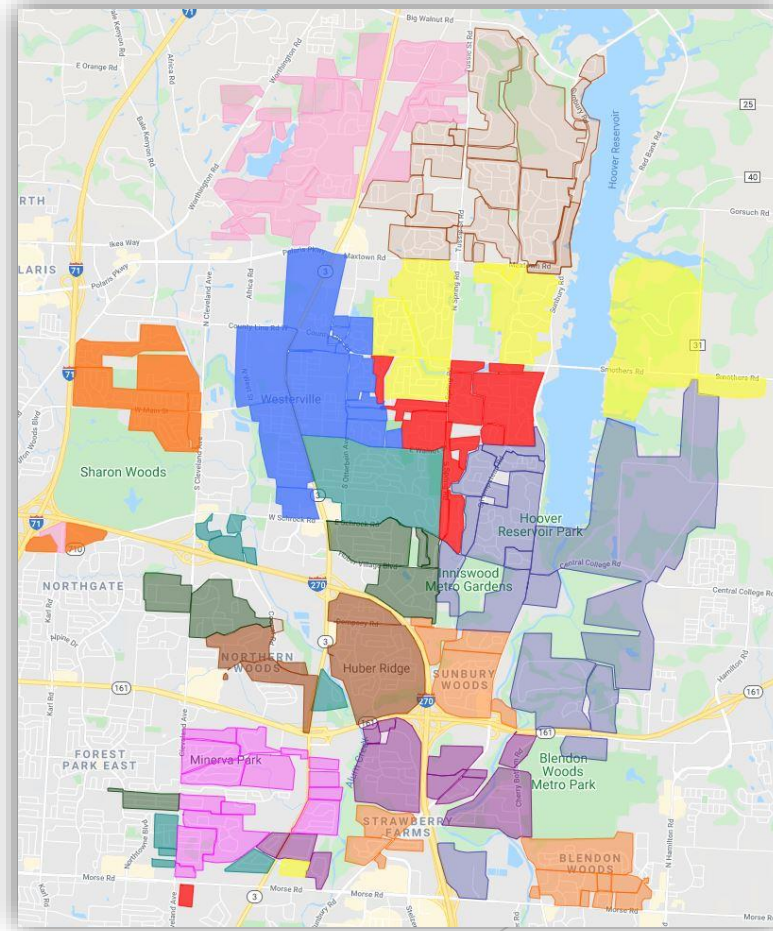
Elementary School Recommendations

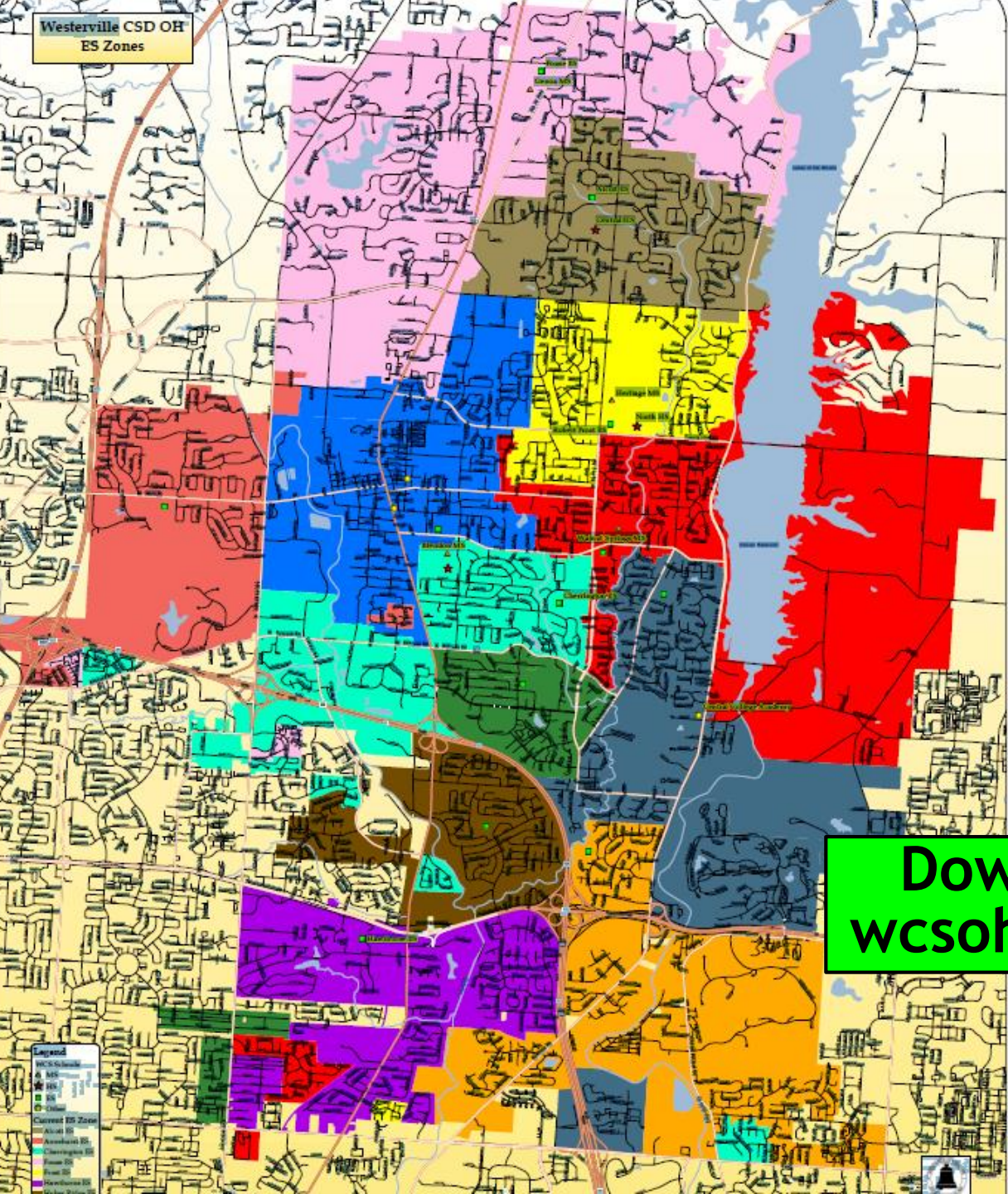
(a larger view is located on the next screen)

Existing ES Boundaries

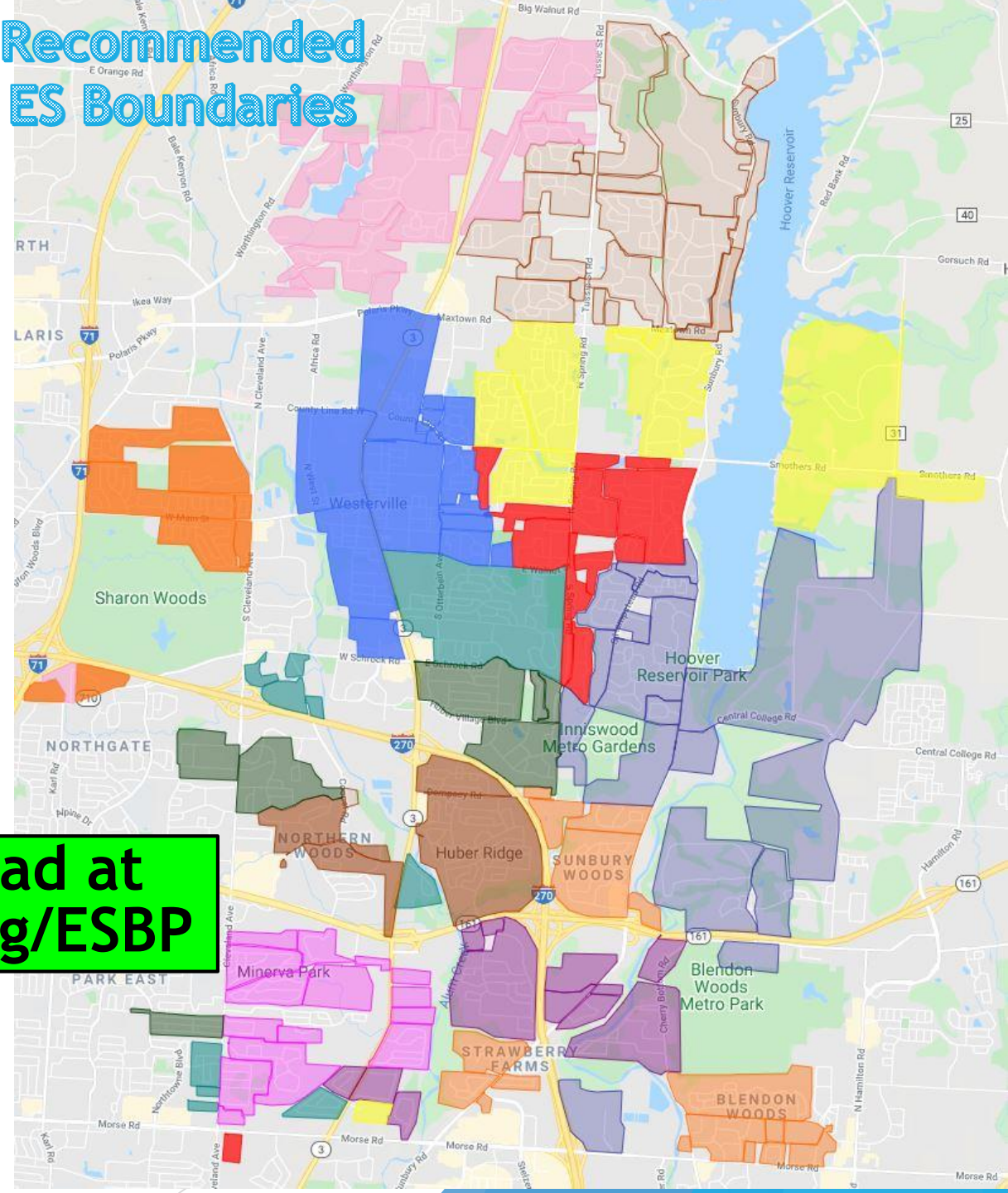


Recommended ES Boundaries





Recommended ES Boundaries



**Download at
wcsoh.org/ESBP**

Recommended ESRC Work Product Demographic Profile Data Sheet

Download at
wcsoh.org/ESBP

Schools	Building Capacity	Target Enrollment 90% - 95%		2019-2020	Proposed For Feedback	After Feedback Alterations	Initial Committee Recommendation	Alignment Corrections Final Recommendation
Alcott	600	(540 - 570)	All Enrollment	548	596	596	596	562
			Econ Disadvantaged	20.1%	17.1%	17.1%	17.1%	15.8%
			Minority/White	30%, 70%	30.2%, 69.8%	30.2%, 69.8%	30.2%, 69.8%	28.8%, 71.2%
Annehurst	450	(405 - 428)	All Enrollment	403	445	408	408	408
			Econ Disadvantaged	38.2%	42.7%	38.2%	38.2%	38.2%
			Minority/White	54.3%, 45.7%	54.6%, 45.4%	50.7%, 49.3%	50.7%, 49.3%	50.7%, 49.3%
Cherrington	450	(405 - 428)	All Enrollment	408	420	400	400	400
			Econ Disadvantaged	37.8%	41.7%	42.0%	42.0%	42.0%
			Minority/White	43.6%, 56.4%	47.1%, 52.9%	46.5%, 53.5%	46.5%, 53.5%	46.5%, 53.5%
Fouse	600	(540 - 570)	All Enrollment	617	572	572	572	572
			Econ Disadvantaged	25.5%	25.5%	25.5%	25.5%	25.5%
			Minority/White	38.2%, 61.8%	38.1%, 61.9%	38.1%, 61.9%	38.1%, 61.9%	38.1%, 61.9%
Hawthorne	600	(540 - 570)	All Enrollment	768	529	529	529	529
			Econ Disadvantaged	57.2%	52.4%	52.4%	52.4%	52.4%
			Minority/White	71.5%, 28.5%	68.1%, 31.9%	68.1%, 31.9%	68.1%, 31.9%	68.1%, 31.9%
Huber Ridge	600	(540 - 570)	All Enrollment	540	558	558	558	558
			Econ Disadvantaged	55.6%	51.8%	51.8%	51.8%	51.8%
			Minority/White	53.1%, 46.9%	47.7%, 52.3%	47.7%, 52.3%	47.7%, 52.3%	47.7%, 52.3%
Mark Twain	450	(405 - 428)	All Enrollment	622	477	502	502	502
			Econ Disadvantaged	36.4%	31.0%	30.5%	30.5%	30.5%
			Minority/White	43.2%, 56.8%	36.3%, 63.7%	35.3%, 64.7%	35.3%, 64.7%	35.3%, 64.7%
McVay 2 new home developments	600	(540 - 570)	All Enrollment	542	556	539	539	573
			Econ Disadvantaged	31.1%	27.2%	27.1%	27.1%	27.7%
			Minority/White	52.2%, 47.8%	46.2%, 53.8%	47.3%, 52.7%	47.3%, 52.7%	47.6%, 52.4%
New ES	600	(540 - 570)	All Enrollment		546	527	546	546
			Econ Disadvantaged		59.5%	58.3%	59.5%	59.5%
			Minority/White		74.7%, 25.3%	74.4%, 25.6%	74.7%, 25.3%	74.7%, 25.3%
Pointview	375	(338 - 357)	All Enrollment	336	312	328	328	328
			Econ Disadvantaged	69.3%	57.3%	58.5%	58.5%	58.5%
			Minority/White	66.7%, 33.3%	54.8%, 45.2%	57.0%, 43.0%	57.0%, 43.0%	57.0%, 43.0%
Robert Frost	450	(405 - 428)	All Enrollment	432	442	481	481	481
			Econ Disadvantaged	29.1%	19.7%	23.9%	23.9%	23.9%
			Minority/White	35%, 65%	28.1%, 71.9%	32.6%, 67.4%	32.6%, 67.4%	32.6%, 67.4%
Whittier	425	(383 - 404)	All Enrollment	374	420	439	420	420
			Econ Disadvantaged	18.3%	20.0%	23.2%	20.0%	20.0%
			Minority/White	24.3%, 75.7%	31.7%, 68.3%	33.9%, 66.1%	31.7%, 68.3%	31.7%, 68.3%
Wilder new apt. developments	600	(540 - 570)	All Enrollment	503	587	587	587	587
			Econ Disadvantaged	39.4%	35.6%	35.6%	35.6%	35.6%
			Minority/White	57.3%, 42.7%	53.3%, 46.7%	53.3%, 46.7%	53.3%, 46.7%	53.3%, 46.7%



Questions?

